



ACTIVE & DISCOVERY ON THE DANUBE

Tour: WBL • BUDAPEST → VILSHOFEN

8
DAYS

3
COUNTRIES

Why dip your toes in the Danube when you can explore and adore its landmarks, legends, customs and cuisine in the most interactive ways? Avalon's Active & Discovery cruises on the Danube invite dreamers and doers to activate their curiosities. To look closer, dive deeper, and forage further into the hamlets and hills of Germany, Austria, and Hungary.

Uncover ancient traditions and local flavours in immersive ways. Enjoy leisurely sightseeing or on-your-own discoveries. Whether you walk through winding alleyways, hike to a castle, bike to a palace or row to your own sanctuary of scenery, our diverse offering of Classic, Discovery and Active excursions along the Danube redefines the rules of engagement.

Move.

Enjoy a little get-up-and-go on your cruising holiday when you:

- Sink your teeth into Count Dracula's Visegrád prison tower on a hike to new heights.
- Paddle a canoe on an excursion through the picturesque Bend region.
- Pedal along the postcard-perfect Wachau Valley.

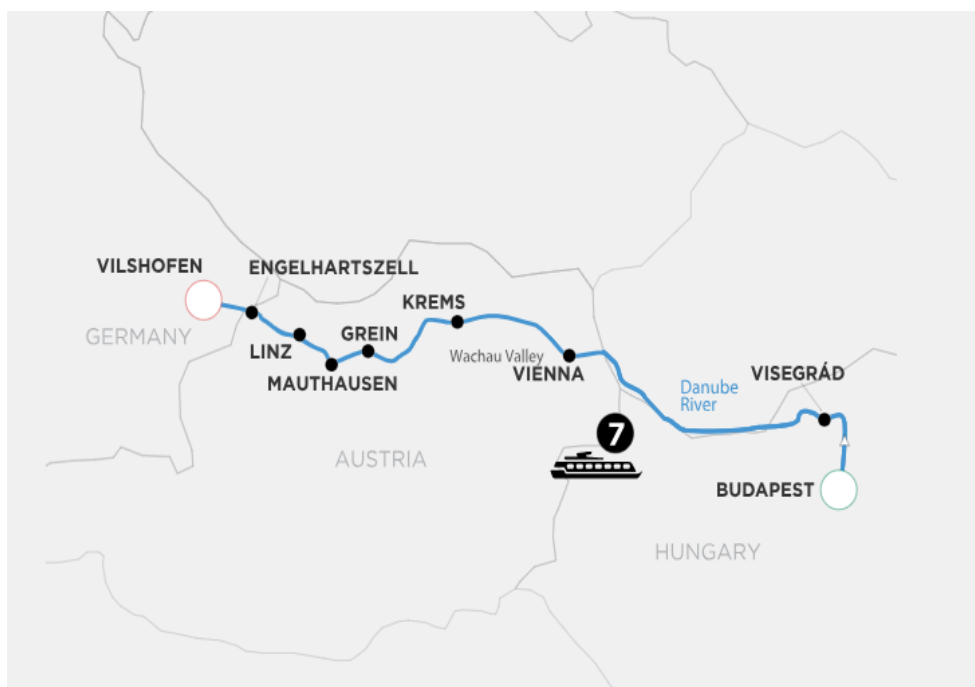
And Be Moved.

Get off the beaten path and relish the world when you:

- See the ancient jousting skills of the St. George Knightly Order at Visegrád Castle.
- Savour a merry morning walk, Vienna's infamous café culture and VIP access to an art museum.
- Meet the Count of Clam at Austria's 12th-century and beautifully preserved Clam Castle.

Plus, Classic sightseeing is always available in every port along the way.

Activate your senses and discover a world of wonder in all-new, entirely "you" ways on your personal, passion-packed cruise along the Danube.



Meals

Breakfast: 7 Lunch: 6 Dinner: 7

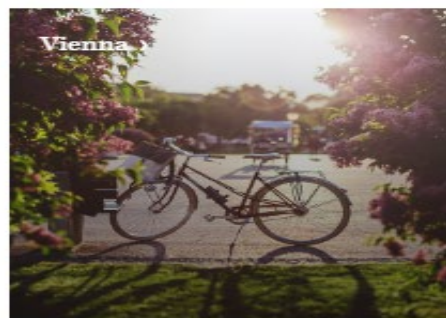
Transport

State-of-the-art, luxurious river cruise vessels with modern services and amenities

Accommodation

Deluxe outside accommodations with Avalon's exclusive Comfort Collection Beds

HIGHLIGHTS



ITINERARY

DAY 1: BUDAPEST, HUNGARY (EMBARKATION)-DANUBE BEND

Welcome to Hungary. Your Suite Ship is Ready for Boarding. Flights into Budapest must arrive by 3:30 pm. Guests must be on board ship by 5 pm. The day is yours to relax and enjoy Eastern Europe's shining city on the Danube. Enjoy a Hungarian Dinner on board during a scenic cruise through the Danube Bend. Later, enjoy live entertainment onboard. EVENING CRUISE TO VISEGRAD (D)

DAY 2: VISEGRAD

Jousting Tournaments and Dracula's Tower ACTIVE - Visit Count Dracula's prison tower on a Hiking Tour, OR: ACTIVE - Take part in a Canoe Excursion through the picturesque Bend Region of the Danube for a truly unique perspective of one of the river's most beautiful stretches, OR: DISCOVERY - Join a Guided Visit to the Medieval Knights Tournament at Visegrad's Lower Castle, featuring targetting and fighting demonstrations by members of the St. George Knightly Order. Spend free time after your selected activities to explore Palotahaz, where stonemasons, smiths, potters, and paper-makers produce their traditional items using age-old techniques. AFTERNOON/OVERNIGHT CRUISE TO VIENNA (B,L,D)



บริษัท รีไลแอนด์ โซลิดี (ไทยแลนด์) จำกัด : 21/43 ชั้น 2-4 อาคาร C, รอยัลฮิลล์ อเวนิว, ซอยศูนย์วิจัย-พระราม 9, แขวงบางกะปิ เขตห้วยขวาง กรุงเทพฯ 10310 Tel. 02-2030088 M/B:089-2040085 Fax. 02-2030695 Email : relbkk2013@gmail.com

DAY 3: VIENNA, AUSTRIA

Strauss, Schnitzel, Strudel and Sachertorte Viennese Waltzes on the Blue Danube ACTIVE - Take a Guided Bike Tour along the famed Ringstrasse and pedestrian avenues of Vienna to see the city's highlights from a unique perspective, OR: DISCOVERY - Take an Insider's Tour of Vienna to get behind the scenes of her sights and attractions. You will meet locals, have the chance to prepare some food, and enjoy other surprises, OR: CLASSIC - Take a Guided Sightseeing Tour of Vienna, including a tour of Belvedere Palace to see Gustave Klimt's renowned "Kiss" painting. Spend free time this afternoon strolling through the pedestrian Karntnerstrasse then take a break for a piece of Sachertorte. Or enjoy an optional excursion in Schonbrunn. This evening consider joining an Optional Excursion to attend a Royal Waltz Concert in an elegant hall. OVERNIGHT DOCKING IN VIENNA (B,L,D)

DAY 4: VIENNA

Feast for the Soul DISCOVERY - Enjoy a morning Guided Walking Tour to see the city in her best light, along with breakfast at a Viennese cafe, OR: CLASSIC - Dive into one of the world's most important museums with a Guided Tour of the Habsburg family's private art collection at the Museum of Fine Arts, and enjoy Italian or Dutch master works, OR: CLASSIC - Take a Guided Tour of the Museum of Fine Arts, followed by the Military Museum, commemorating the past of the Habsburg Empire. OVERNIGHT CRUISE TO KREMS (B,L,D)

DAY 5: KREMS

Take a Canoe or a Bike through Austria's Wine Country Join your Adventure Host for today's special activities. ACTIVE - Paddle a canoe on a Guided Tour to see the Austrian waterways and shoreline scenery from a unique perspective, OR: ACTIVE - Take a Guided Bike Tour from Krems to Spitz, and enjoy a stop in Durnstein to see the mesmerizing blue Stiftskirche, and to sample local specialties, OR: DISCOVERY - Join an interactive Wine World Experience with wine tasting, OR: DISCOVERY - Enjoy a Guided Visit that showcases production of regional fruits, vegetables, wine, or other products. Relax on board this afternoon to enjoy the picturesque Wachau Valley scenery as you cruise to Grein. GREIN A Modern-Day Castle and the Count DISCOVERY - See Burg Clam on a Guided Visit, and meet the Count of Clam during your tour. OVERNIGHT DOCKING IN GREIN (B,L,D)

DAY 6: GREIN

Theatre History...Alive and Well in Grein CLASSIC - Take a Guided Walk of Grein, including its historic theatre, the oldest in Austria still holding regular performances. Take a mid-morning cruise to Mauthausen. MAUTHAUSEN History Lessons and Monastic Life ACTIVE - Take a Guided Bike Tour along the Danube and discover how fertile this area is. Stop at a local farm and learn more about farming life and flood protection, OR: CLASSIC - Visit the 9th-century St. Florian Monastery-the largest monastery in upper Austria and home to Augustine monks, OR: CLASSIC - Join a sobering Guided Tour of Mauthausen Memorial, one of the largest and most brutal Nazi camp of WWII. This afternoon sail to Linz arriving this evening. LINZ Legendary, Lovely Linz Tonight, enjoy live entertainment on board your ship. OVERNIGHT CRUISE TO ENGELHARTSZELL (B,L,D)



บริษัท รีไลแอนด์ โซลิดี (ไทยแลนด์) จำกัด : 21/43 ชั้น 2-4 อาคาร C, รอยัลชิตี้ อเวนิว, ซอยศูนย์วิจัย-พระราม 9, แขวงบางกะปิ เขตห้วยขวาง กรุงเทพฯ 10310 Tel. 02-2030088 M/B:089-2040085 Fax. 02-2030695 Email : relbkk2013@gmail.com

DAY 7: ENGELHARTSZELL-SCHLOGEN OXBOW

Memories and Beer in the Making ACTIVE - Bike your way to a local trappist monastery in Engelhartzell, OR: DISCOVERY - Join a Guided Tour to the "House by the stream" (Haus am Strom) and walk across the Danube Power-Station Jochenstein, OR: CLASSIC - Visit the stunning rococo-style Engelszell Abbey, and explore its Sensory Garden-complete with stone labyrinth, herb garden, and vineyard. Sample cheese and beer made by the resident Trappist monks. ACTIVE - This afternoon, enjoy a scenic Guided Hike along the Danube's Schlogen Oxbow, a dramatic bend carved by centuries. Or, as a relaxing option, enjoy free time on the Sky Deck this afternoon while you sail through the amazing horseshoe bend of the Danube's Schlogen Oxbow on your way to Vilshofen. EVENING/OVERNIGHT CRUISE TO VILSHOFEN (B,L,D)

DAY 8: VILSHOFEN (DISEMBARKATION)

Your cruise ends with breakfast this morning. Flights should not leave Munich airport before 8 am. (B)

DATES & PRICING

WBL - ACTIVE & DISCOVERY ON THE DANUBE FROM: BUDAPEST TO VILSHOFEN						
Date	Vessels	Cabin / USD / (Cruise Only) / pax				
		E	D	B	A	P
18 – 25 Jul 2024	Tranquility II	3,899	4,098	5,348	5,448	5,498
Promotion 50%		1,950	2,049	2,674	2,724	2,749
Excluded Port Charges USD 210 /Pax						
Excluded Gratuity USD 128 /Pax						
Price and promotion are subject to change						



DECK PLAN

- | | | |
|---|----------------------|-------------------|
| 1 Sky Lounge | 6 Deck Game Area | 12 Elevator |
| 2 Navigation Bridge | 7 Observation Lounge | 13 Lobby |
| 3 Sky Grill | 8 Panorama Bistro | 14 Club Lounge |
| 4 Whirlpool | 9 Panorama Lounge | 15 Galley |
| 5 Premium Lounge
Chairs and Shade
Awnings | 10 Bar | 16 Dining Room |
| | 11 Reception | 17 Fitness Center |

CATEGORIES

- | | |
|--------------------|---|
| Royal Suite | Royal Deck Royal Suites |
| Cat. P | Royal Deck Panorama Suites |
| Cat. A | Sapphire Deck Forward Panorama Suites |
| Cat. B | Sapphire Deck Aft Panorama Suites |
| Cat. D | Indigo Deck Aft Deluxe Staterooms |
| Cat. E | Indigo Deck Forward Deluxe Staterooms |



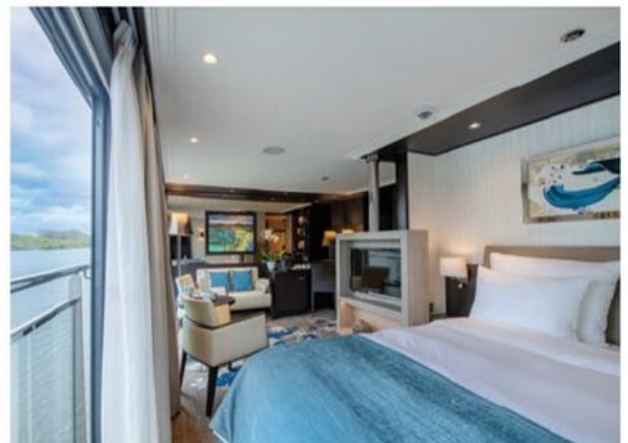
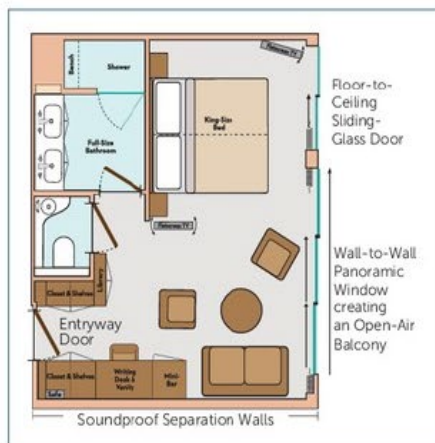
AVALON SUITE SHIPSSM

ROYAL SUITES, PANORAMA SUITESSM & DELUXE STATEROOMS

ROYAL SUITES

300 SQ. FT.

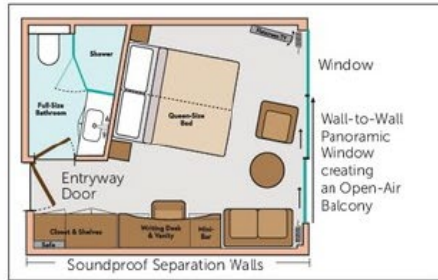
ROYAL DECK
CATEGORY S



PANORAMA SUITESSM

200 SQ. FT.

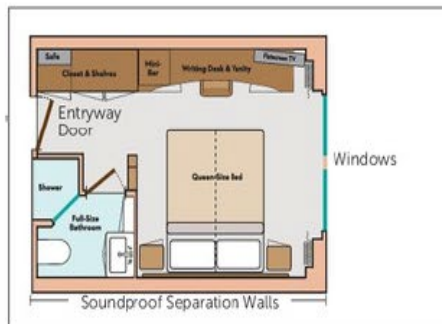
ROYAL & SAPPHIRE DECK
CATEGORY B, A, P



DELUXE STATEROOMS

172 SQ. FT.

INDIGO DECK
CATEGORY D, E



TERMS AND CONDITIONS

Visas & Passports

You are responsible for obtaining and paying for all visas and entry documents, for meeting all health and other requirements, and for any documents required by the laws, regulations, orders, and/or requirements of the countries you will visit. The Company is not responsible for providing specific visa and passport information or documentation, and The Company cannot accept liability for any traveller refused entry onto any transport or into any country due to failure of the traveller to carry correct documentation. All travellers travelling internationally are required to have a passport. Most countries require that the passport be valid for at least six (6) months beyond the conclusion of the trip. It is recommended you have a minimum of three blank pages in your passport when travelling, as many countries require blank pages. Multiple-entry visas are required for some holidays. It is your responsibility to verify all visa and passport requirements. The process of obtaining a visa and/or passport can take up to three months or more.



Cancellations and Cancellation Fees

If cancellation is received in writing by The Company before the final payment due date of your holiday, the non-refundable deposit will be retained in addition to any airline-imposed fees or cancellation charges. If cancellation is received in writing by The Company after the final payment due date of your holiday, the below specified per person cancellation fees apply for individual reservations. The total price specified below does not include discounts, promotions, or special incentives. (For group reservations, refer to the Group Policy. SafetyNet Protection does not apply to Group Bookings). No cancellation fee will apply to holidays cancelled within the cooling off period (see clause 5).

Standard Cancellation Fees for escorted and independent holidays:

45-22 days prior to scheduled departure: 20% of total price (including SafetyNet Protection)

21-8 days prior to scheduled departure: 30% of total price (including SafetyNet Protection)

7-1 days prior to scheduled departure: 50% of total price (including SafetyNet Protection)

On scheduled departure day and later: 100% of total price (including SafetyNet Protection)

Note: Pre-paid gratuities are not subject to cancellation fees.

PLEASE PROVIDE THE NAME, DATE OF BIRTH, AND EMAIL OF EACH PASSENGER AT THE TIME OF THE BOOKING

Standard Cancellation Fees for cruise holidays:

90-60 days prior to scheduled departure: 35% of total price (including SafetyNet Protection)

59-30 days prior to scheduled departure: 50% of total price (including SafetyNet Protection)

29-1 days prior to scheduled departure: 80% of total price (including SafetyNet Protection)

On scheduled departure day and later: 100% of total price (including SafetyNet Protection)

Note: Pre-paid gratuities and Port Charges are not subject to cancellation fees.

Exceptions to the standard cancellation fees:

Other cancellation fees may apply to holidays listed in this brochure. Please check with your Travel Agent or your local representative of The Company prior to booking for the latest Terms & Conditions.

Cancellation fees may also apply to any additional services reserved prior to, during, and after the holiday. If flight changes (including but not limited to flight cancellations or name changes) are requested, revision fees, change fees, or airline cancellation fees will apply in addition to the above cancellation fees (see "Revision Fees" below).

Cancellation fees relating to insurance policies will be subject to the Terms and Conditions of the insurance provider and will incur the standard Revision Fee (see "Revision Fees" below).

Insurance

The above cancellation charges will be applied in all cases. The Company strongly recommends you take out comprehensive travel insurance, including coverage for medical expenses, loss of luggage, and land content and airfare charges that may arise, including due to cancellation.

Revision Fees

A fee of \$30 per transaction will be charged for any alteration or revision made to a reservation after the deposit is made. Any revision to an air travel reservation may result in the loss of confirmed airline reservations or increased airfare which will be payable by you. Additional airline and hotel charges may also apply and may be up to 100% of the full price. A change of traveller name, holiday date, or itinerary after the final payment date will be treated as a full cancellation and new reservation; holiday cancellation fees (as above) apply.

Refunds

Please note that any request for refunds is subject to these Terms & Conditions. No refund will be made for unused services (including early or enforced disembarkation), for unused transportation where group activity tickets are involved, or for voluntary modifications made by the traveller.

The Company reserves the right to cancel or reschedule any holiday departure in accordance with operational requirements or circumstances beyond its control. If a holiday is cancelled prior to the scheduled departure date, The Company's only responsibility will be to refund the amount received for the reservation. Wherever possible, The Company will offer the same holiday with a different departure date, or an alternative similar holiday. If there is a difference in cost, it will be your expense. For air inclusive holidays, The Company will try to confirm air schedules for the selected new dates, subject to availability. The Company is not responsible for any additional costs or fees relating to the issuance and/or cancellation of air tickets or other travel arrangements not made through The Company.

The accommodation listed in our websites/brochures is intended to be used on all departures. However, if a change becomes necessary for any reason, substitute accommodation will be equivalent in standard to that shown. No refunds are provided for accommodation variations and full cancellation penalties as noted above apply.

SafetyNet Protection

For booking up to 16 persons traveling together, a SafetyNet Protection can be purchased to be used in case the traveler(s) is not able to travel.

SafetyNet Protection is non-refundable, and conditions apply.

The SafetyNet Transfer Protection enables Globus Family passengers to amend their tour up to 24 hours prior to the tour departure date to another tour departing up to 31 December in the following calendar year, (once only) without any charges or penalties. If SafetyNet transfer protection is applied and the booking is subsequently cancelled, the original booking and transfer date will be reviewed, the transfer date of the original booking will

then be taken as the tour cancellation date. Cancellation penalties that apply to the original booking will be compared with the cancellation penalties to that of the tour transferred booking and the higher penalties will be applied.

The SafetyNet Cancellation Protection enables Globus Family passengers to cancel their tour in full - up to 30 days prior to the tour departure date, without any applicable cancellation charges or penalties.

CONDITIONS FOR BUY ONE GET ONE PROMOTION :

- Subject to availability, valid on new bookings only
- Offer does not apply to cruise extensions, port tax and gratuity
- Not combinable with any other offer or discounts
- Applicable to single travellers, full single supplement applies
- Not applicable to Royal Suites
- Full payment required at time of booking
- Booking is non-refundable (port tax and gratuity only are refundable)
- US\$60 Amendment fees applies to name changes
- Comprehensive travel insurance is highly recommended
- Applicable to named group bookings only, no group rebates apply
- Safetynet is applicable
- Departures noted * are themed cruises
- Further conditions may apply, offer can be withdrawn or amended at any time