

BURGUNDY & PROVENCE

Tour: WLJ • ARLES → CHALON

8
DAYS

1
COUNTRY

Take a wondrous journey through beautiful views of France along the Rhône and Saône Rivers with guided sightseeing in the well-known French treasures and some hidden gems too! Embark your ship in Arles—famous for inspiring the paintings of Van Gogh and its 1st-century Roman Amphitheatre, which hosts plays and concerts to this day. On a guided tour of historical Avignon, see the 14th-century Palace of the Popes—the largest gothic fortress in the world.

The city of Tournon is beautifully nestled among vineyards and you'll go on a guided walk of this medieval treasure with plenty of Roman ruins and a fascinating 16th-century castle. Lyon, France's gastronomic capital sits at the junction of the Rhône and Saône Rivers and is a showcase of medieval and Renaissance architecture. Visit the popular Place des Terreaux and stand in front of the famous fountain you've seen on postcards.

Meals

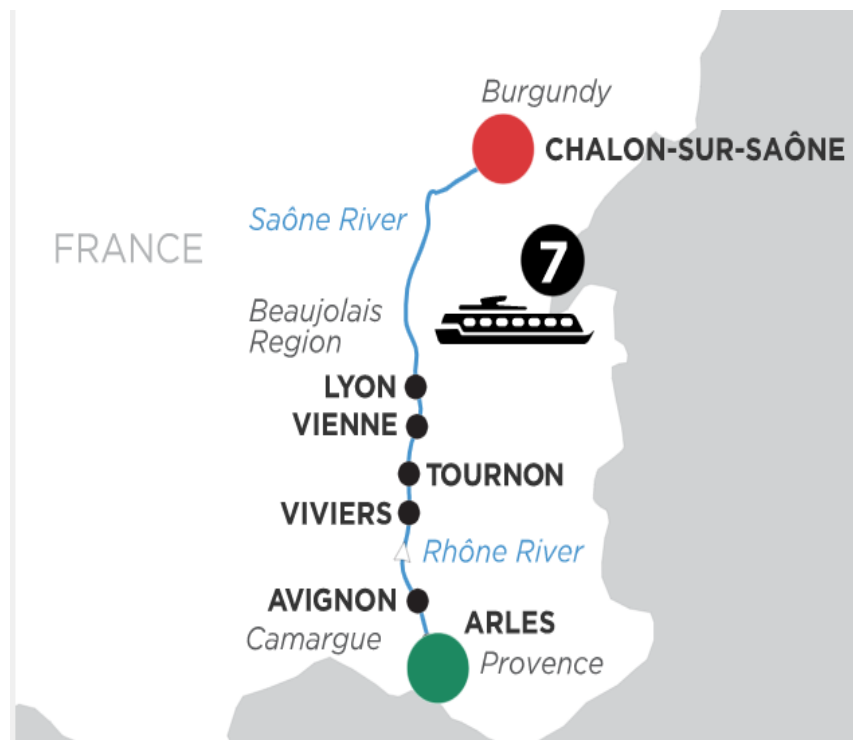
Breakfast: 7 Lunch: 6 Dinner: 7

Transport

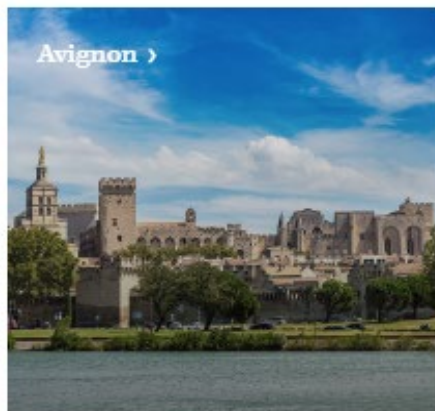
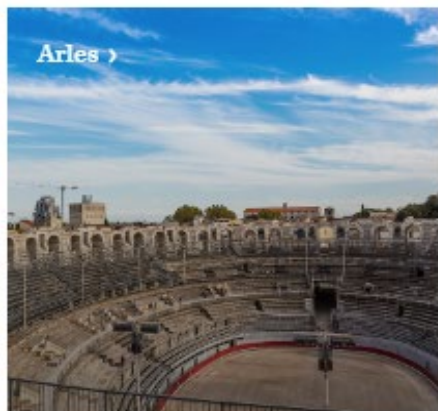
State-of-the-art, luxurious river cruise vessels with modern services and amenities

Accommodation

Deluxe outside accommodations with Avalon's exclusive Comfort Collection Beds



HIGHLIGHTS



ITINERARY

DAY 1: ARLES (EMBARKATION)

Welcome to France. Your Suite Ship is Ready for Boarding. Flights into Marseille must arrive by 3 pm. Guests must be on board ship by 5 pm. OVERNIGHT DOCKING IN ARLES (D)

DAY 2: ARLES

Inspiring Sights and Avant-Garde Lights Visit the Adventure Centre for today's activities with your Adventure Host. ACTIVE Get your daily dose of exercise through a Power Walk in Arles with your Adventure Host, OR: DISCOVERY Attend a Painting Workshop to learn techniques of Vincent van Gogh. Create your own painting in the style of the legendary artist, OR: CLASSIC Enjoy a Guided Walking Tour of Arles-the captivating city of the Provence region. You'll visit the Roman Amphitheatre in this visually stunning city. Take free time to stop in Le Cafe Van Gogh for a glass of wine, before sailing to Avignon. OVERNIGHT DOCKING IN AVIGNON (B,L,D)

DAY 3: AVIGNON

The City of Popes in Picturesque Provence CLASSIC Take a Guided Sightseeing Tour of the fortress city of Avignon-with its ramparts encircling the city-and a visit to the amazing Palace of the Popes. Guided Optional Excursions include a visit to the ancient Roman aqueduct of Pont du Gard, or a trip to the famed wine cellars of Chateauneuf-du-Pape for a true taste of the Rhone wine region. Explore Avignon on your own for the city's art and culture, theatre, and museums. Be sure to snap photos of the captivating countryside, historic monuments, and the medieval Pont Saint-Benezet. Later, enjoy onboard live entertainment. OVERNIGHT DOCKING IN AVIGNON (B,L,D)

DAY 4: VIVIERS

World History in a Charming French Country Village Enjoy a leisurely morning sail to Viviers. ACTIVE Walk your way up to Vivier's hilltop Cathedral with your Adventure Host, OR: CLASSIC Explore the pale-stone buildings of Viviers on a late afternoon Guided Walking Tour of this charming village. You'll see its Romanesque cathedral and Old Town with a mix of historical Christian, Roman, and medieval influences. EVENING/OVERNIGHT CRUISE TO TAIN L'HERMITAGE (B,L,D)

DAY 5: TAIN L'HERMITAGE

A Rendezvous with Castle Views and Vineyards Join your Adventure Host for today's special activities. ACTIVE Explore Tournon by foot as you follow your Adventure Host for a morning hike in this beautiful town along the Rhone, OR: CLASSIC Take a morning Guided Walking Tour to explore Tournon-one of France's oldest medieval cities with its 16th-century castle. In the early afternoon cruise to Lyon. OVERNIGHT DOCKING IN LYON (B,L,D)

DAY 6: LYON

Adventures in Food and Wine in the Gastronomy Capital of France CLASSIC Join a Guided Sightseeing Tour to survey Lyon from Fourviere Hill with its numerous churches. You'll also explore the Old Town with its maze of medieval alleyways, and the lively cafes, monuments, and famed fountain of Place des Terreaux. Spend free time riding a bike through Lyon's town squares, over bridges, and along the banks where the Rhone and Saone rivers meet. Enjoy live entertainment while sailing to Tournus. EVENING/OVERNIGHT CRUISE TO TOURNUS (B,L,D)

DAY 7: TOURNUS- CHALON-SUR-SAONE

Wine and Cheese on the Stunning Saone DISCOVERY Travel into the rolling landscapes of the Maconnais region to learn about its world-famous Chardonnay vineyards, the wines produced here, and to attend a wine-tasting in the cellars of a real medieval castle! DISCOVERY Later, enjoy a delicious Cheese Tasting on board your ship. Enjoy live entertainment on board this evening. OVERNIGHT DOCKING IN CHALON-SUR-SAONE (B,L,D)

DAY 8: CHALON-SUR-SAONE (DISEMBARKATION)

Your cruise ends with breakfast this morning. Flights should not leave Lyon airport before 8am. (B)

DATES & PRICING

TOUR CODE WLJ - BURGUNDY & PROVENCE : ARLES to CHALON						
Date	Vessels	Cabin / USD / (Cruise Only) / pax				
		E	D	B	A	P
02 – 09 Apr 2024 **Culinary**	Poetry II	-	4,098	5,348	5,448	5,498
Promotion 50%		-	2,049	2,674	2,724	2,749
09 – 16 Jul 2024	Poetry II	4,199	4,398	5,648	5,748	5,798
Promotion 50%		2,100	2,199	2,824	2,874	2,899
06 – 13 Aug 2024	Poetry II	4,199	4,398	5,648	5,748	5,798
Promotion 50%		2,100	2,199	2,824	2,874	2,899
Excluded Port Charges USD 210 /Pax						
Excluded Gratuity USD 128 /Pax						
Price and promotion are subject to change						



DECK PLAN

- | | | |
|-------------------------------------------------|----------------------|-------------------|
| 1 Sky Lounge | 6 Deck Game Area | 12 Elevator |
| 2 Navigation Bridge | 7 Observation Lounge | 13 Lobby |
| 3 Sky Grill | 8 Panorama Bistro | 14 Club Lounge |
| 4 Whirlpool | 9 Panorama Lounge | 15 Galley |
| 5 Premium Lounge
Chairs and Shade
Awnings | 10 Bar | 16 Dining Room |
| | 11 Reception | 17 Fitness Center |

CATEGORIES

- | | |
|--------------------|-----------------------------------------|
| Royal Suite | Royal Deck Royal Suites |
| Cat. P | Royal Deck Panorama Suites |
| Cat. A | Sapphire Deck Forward Panorama Suites |
| Cat. B | Sapphire Deck Aft Panorama Suites |
| Cat. D | Indigo Deck Aft Deluxe Staterooms |
| Cat. E | Indigo Deck Forward Deluxe Staterooms |



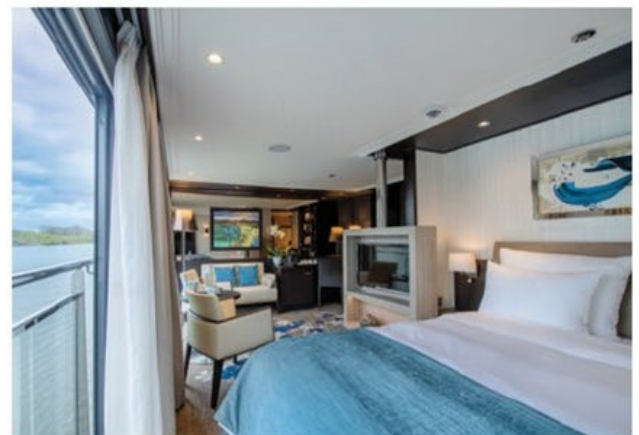
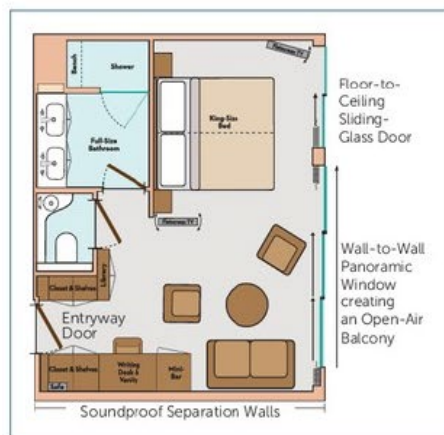
AVALON SUITE SHIPSSM

ROYAL SUITES, PANORAMA SUITESSM & DELUXE STATEROOMS

ROYAL SUITES

300 SQ. FT.

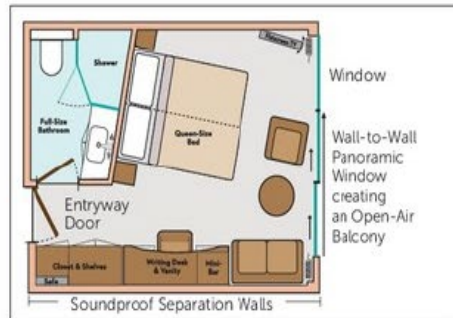
ROYAL DECK
CATEGORY S



PANORAMA SUITESSM

200 SQ. FT.

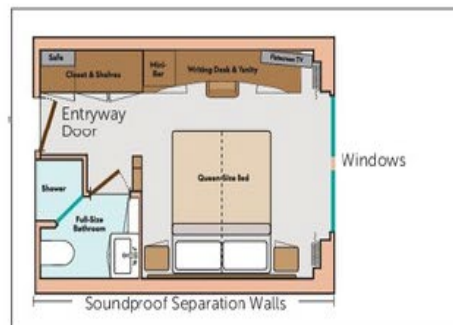
ROYAL & SAPPHIRE DECK
CATEGORY B, A, P



DELUXE STATEROOMS

172 SQ. FT.

INDIGO DECK
CATEGORY D, E



TERMS AND CONDITIONS

Visas & Passports

You are responsible for obtaining and paying for all visas and entry documents, for meeting all health and other requirements, and for any documents required by the laws, regulations, orders, and/or requirements of the countries you will visit. The Company is not responsible for providing specific visa and passport information or documentation, and The Company cannot accept liability for any traveler refused entry onto any transport or into any country due to failure of the traveler to carry correct documentation. All travelers traveling internationally are required to have a passport. Most countries require that the passport be valid for at least six (6) months beyond the conclusion of the trip. It is recommended you have a minimum of three blank pages in your passport when traveling, as many countries require blank pages. Multiple-entry visas are required for some holidays. It is your responsibility to verify all visa and passport requirements. The process of obtaining a visa and/or passport can take up to three months or more.

Cancellations and Cancellation Fees

If cancellation is received in writing by The Company before the final payment due date of your holiday, the non-refundable deposit will be retained in addition to any airline-imposed fees or cancellation charges. If cancellation is received in writing by The Company after the final payment due date of your holiday, the below specified per person cancellation fees apply for individual reservations. The total price specified below does not include discounts, promotions, or special incentives. (For group reservations, refer to the Group Policy. SafetyNet Protection does not apply to Group Bookings). No cancellation fee will apply to holidays canceled within the cooling off period (see clause 5).

Standard Cancellation Fees for escorted and independent holidays:

45-22 days prior to scheduled departure: 20% of total price (including SafetyNet Protection)

21-8 days prior to scheduled departure: 30% of total price (including SafetyNet Protection)

7-1 days prior to scheduled departure: 50% of total price (including SafetyNet Protection)

On scheduled departure day and later: 100% of total price (including SafetyNet Protection)

Note: Pre-paid gratuities are not subject to cancellation fees.

PLEASE PROVIDE THE NAME, DATE OF BIRTH, AND EMAIL OF EACH PASSENGER AT THE TIME OF THE BOOKING

Standard Cancellation Fees for cruise holidays:

90-60 days prior to scheduled departure: 35% of total price (including SafetyNet Protection)

59-30 days prior to scheduled departure: 50% of total price (including SafetyNet Protection)

29-1 days prior to scheduled departure: 80% of total price (including SafetyNet Protection)

On scheduled departure day and later: 100% of total price (including SafetyNet Protection)

Note: Pre-paid gratuities and Port Charges are not subject to cancellation fees.

Exceptions to the standard cancellation fees:

Other cancellation fees may apply to holidays listed in this brochure. Please check with your Travel Agent or your local representative of The Company prior to booking for the latest Terms & Conditions.

Cancellation fees may also apply to any additional services reserved prior to, during, and after the holiday. If flight changes (including but not limited to flight cancellations or name changes) are requested, revision fees, change fees, or airline cancellation fees will apply in addition to the above cancellation fees (see "Revision Fees" below).

Cancellation fees relating to insurance policies will be subject to the Terms and Conditions of the insurance provider and will incur the standard Revision Fee (see "Revision Fees" below).

Insurance

The above cancellation charges will be applied in all cases. The Company strongly recommends you take out comprehensive travel insurance, including coverage for medical expenses, loss of luggage, and land content and airfare charges that may arise, including due to cancellation.

Revision Fees

A fee of \$30 per transaction will be charged for any alteration or revision made to a reservation after the deposit is made. Any revision to an air travel reservation may result in the loss of confirmed airline reservations or increased airfare which will be payable by you. Additional airline and hotel charges may also apply and may be up to 100% of the full price. A change of traveler name, holiday date, or itinerary after the final payment date will be treated as a full cancellation and new reservation; holiday cancellation fees (as above) apply.

Refunds

Please note that any request for refunds is subject to these Terms & Conditions. No refund will be made for unused services (including early or enforced disembarkation), for unused transportation where group activity tickets are involved, or for voluntary modifications made by the traveler.

The Company reserves the right to cancel or reschedule any holiday departure in accordance with operational requirements or circumstances beyond its control. If a holiday is canceled prior to the scheduled departure date, The Company's only responsibility will be to refund the amount received for the reservation. Wherever possible, The Company will offer the same holiday with a different departure date, or an alternative similar

holiday. If there is a difference in cost, it will be your expense. For air inclusive holidays, The Company will try to confirm air schedules for the selected new dates, subject to availability. The Company is not responsible for any additional costs or fees relating to the issuance and/or cancellation of air tickets or other travel arrangements not made through The Company.

The accommodation listed in our websites/brochures is intended to be used on all departures. However, if a change becomes necessary for any reason, substitute accommodation will be equivalent in standard to that shown. No refunds are provided for accommodation variations and full cancellation penalties as noted above apply.

SafetyNet Protection

For booking up to 16 persons traveling together, a SafetyNet Protection can be purchased to be used in case the traveler(s) is not able to travel.

SafetyNet Protection is non-refundable and conditions apply.

The SafetyNet Transfer Protection enables Globus Family passengers to amend their tour up to 24 hours prior to the tour departure date to another tour departing up to 31 December in the following calendar year, (once only) without any charges or penalties. If SafetyNet transfer protection is applied and the booking is subsequently cancelled, the original booking and transfer date will be reviewed, the transfer date of the original booking will then be taken as the tour cancellation date. Cancellation penalties that apply to the original booking will be compared with the cancellation penalties to that of the tour transferred booking and the higher penalties will be applied.

The SafetyNet Cancellation Protection enables Globus Family passengers to cancel their tour in full - up to 30 days prior to the tour departure date, without any applicable cancellation charges or penalties.

CONDITIONS FOR BUY ONE GET ONE PROMOTION :

- Subject to availability, valid on new bookings only
- Offer does not apply to cruise extensions, port tax and gratuity
- Not combinable with any other offer or discounts
- Applicable to single travellers, full single supplement applies
- Not applicable to Royal Suites
- Full payment required at time of booking
- Booking is non-refundable (port tax and gratuity only are refundable)
- US\$60 Amendment fees applies to name changes
- Comprehensive travel insurance is highly recommended
- Applicable to named group bookings only, no group rebates apply
- Safetynet is applicable
- Departures noted * are themed cruises
- Further conditions may apply, offer can be withdrawn or amended at any time