

TULIP TIME CRUISE

Tour: WAA • AMSTERDAM → AMSTERDAM

8

DAYS

2

COUNTRIES

→ Share this

This springtime river cruise gets underway in Holland's colourful capital of Amsterdam. This 700-year-old city offers an abundance of classic architecture, cafés, and restaurants to explore before you embark on your river cruise through Holland and Belgium. Sail through Rotterdam's harbor, said to be the world's busiest port. Garden enthusiasts will delight in a visit to see the breathtaking colours of Keukenhof, also known as the "Garden of Europe." With 70 acres of parkland and lakes, it's one of the world's largest flower gardens with nearly 7 million flowering bulbs bursting with colour. Next, sail to Antwerp, Belgium's second-largest city, known for its centuries-old history in diamond trading amid ancient buildings and monuments combined with modern architecture. In Ghent, Belgium, join a local expert for a guided tour of the city, including a visit to St. Baaf's Cathedral.

Your cruise traverses back into Holland where you'll explore Middelburg, formerly an important trading city. You'll still get a sense of its historic wealth today with its impressive structures like the Gothic Town Hall, Abbey Tower, and bustling Market Square. No trip to Holland is complete without a visit to the technical miracle that is the Delta Works, a storm flood barrier almost six miles long, constructed after the floods of 1953. This beautiful and historic springtime river cruise concludes with more time to explore the wonderful city of Amsterdam. See the most fascinating views of the city on a canal cruise along the elegant grachten lined with homes dating back to the city's "Golden Age".

Meals

Breakfast: 7 Lunch: 6 Dinner: 7

Transport

State-of-the-art, luxurious river cruise vessels with modern services and amenities

Accommodation

Deluxe outside accommodations with Avalon's exclusive Comfort Collection Beds



HIGHLIGHTS



ITINERARIES:

DAY 1: AMSTERDAM, HOLLAND (EMBARKATION)

Welcome to Holland. Your Suite Ship is Ready for Boarding. Flights into Amsterdam must arrive by 3:30 pm. Guests must be on board ship by 5 pm. Your day in Amsterdam is free to explore at your leisure. You may choose to join a Guided Optional Excursion to beautiful Zaanse Schans where you'll see a wonderful collection of well-preserved historic windmills and Dutch houses. Enjoy dinner and explore the ship on your first night on board. EVENING/OVERNIGHT CRUISE TO ROTTERDAM (D)

DAY 2: ROTTERDAM

Dutch Treats and Flowers Sweet Visit the Adventure Centre for today's activities with your Adventure Host. ACTIVE - Experience Rotterdam by foot with your Adventure Host, OR: CLASSIC - Join a full- or half-day Guided Tour of breathtaking Keukenhof-known as the "Garden of Europe"-for its 70 acres of lush parkland, lakes, and the world's largest flower gardens-with more than seven million tulips, daffodils and hyacinths as well as other bulbs, planted each year. Take some free time to relax on the Harbour-side in Rotterdam with an artisan beer, a slice of appeltaart (Dutch apple pie), and a koffie verkeerd, a typical Dutch drink with equal parts coffee and milk. Take a bike from your ship to explore Rotterdam and the surrounding area. Before dinner, enjoy a cruise through Rotterdam harbour. Later, enjoy live entertainment on board. EVENING/OVERNIGHT CRUISE TO ANTWERP (B,L,D)

DAY 3: ANTWERP, BELGIUM

Cathedrals, Carats and Crepes ACTIVE - Explore Antwerp by bike with your Adventure Host, OR: CLASSIC - Take a Guided Tour of this sophisticated city to visit the central Grote Markt, lined with 16th-century guildhall houses. You'll also see the beautiful city hall, the Cathedral of Our Lady with its stunning altarpiece paintings by Rubens. Alternatively, you may choose to join a Guided Optional Excursion to the nearby capital, Brussels-considered home to the European Union, and admire its magnificent palaces and cathedrals. You might prefer to take time on your own to indulge in Antwerp's signature Belgian waffles and crepes-or explore this bike-friendly city from its old wharfs to its legendary diamond district. EVENING/OVERNIGHT CRUISE TO GHENT (B,L,D)

DAY 4: GHENT

Medieval Masterpieces and Flemish Finery ACTIVE - Explore a different side of Ghent by bike with your Adventure Host, OR: CLASSIC - Explore Ghent-"The Diamond of Flanders"-with a Guided Sightseeing Tour of this showcase of medieval Flemish wealth. You'll visit St. Bavo's Cathedral-with its remarkable Flemish artwork. Alternatively, you may choose to join a full-day Guided Optional Excursion of Bruges to explore its canals, cobbled streets, and medieval buildings. You'll see its crisscrossed canals, the 13th-century belfry of Market Square, and charming patrician houses. You won't miss the opportunity to explore Ghent since this Optional Excursion ends with an orientation walk of the "Diamond of Flanders." EVENING/OVERNIGHT CRUISE TO MIDDELBURG (B,L,D)

DAY 5: MIDDELBURG, HOLLAND

A Spicy History in Middelburg's Dutch Harbour Town Join your Adventure Host for today's special activities. CLASSIC - Join a Guided Walking Tour through the winding cobblestones and canals of Middelburg. See the 15th-century Gothic Town Hall and learn about its important role in the spice trade and Dutch East India trading. Spend some free time biking or walking through Middelburg to sample Babbelaar cookies, fries, or beer before cruising to Veere. During lunchtime enjoy a short sailing from Middelburg to Veere. ACTIVE - Alternatively bike from Middelburg to Veere with your Adventure Host. VEERE History and Scottish Houses CLASSIC - Explore the town of Veere with an expert local guide. EVENING/OVERNIGHT CRUISE TO WILLEMSTAD (B,L,D)

DAY 6: WILLEMSTAD

Willemstad's Windmills and Historic Harbour ACTIVE - See Willemstad by bike with your Adventure Host, OR: CLASSIC - Join a Guided Walking Tour of Willemstad and discover its many beautifully restored buildings from the 17th and 18th Century. DISCOVERY - Later, enjoy a Cheese Tasting on board as you prepare to sail to Amsterdam. AFTERNOON/OVERNIGHT CRUISE TO AMSTERDAM (B,L,D)

DAY 7: AMSTERDAM

Canals of Colourful Amsterdam ACTIVE - Start your day joining your Adventure Host on an early morning walk in Amsterdam, OR: DISCOVERY - Discover Aalsmeer Flower Auction-the largest in the world, where around 20 million flowers are sold every day. Later enjoy a typical Dutch breakfast, OR: CLASSIC - Explore the iconic waterways of Amsterdam on a Guided Canal Cruise past stately homes of Amsterdam's "Golden Age." This afternoon choose among the many Guided Optional Excursions available. Take some free time to explore Amsterdam's colourful streets and canal houses, galleries, and shops. OVERNIGHT DOCKING IN AMSTERDAM (B,L,D) *On departure 331 this excursion will be replaced with a visit to Amsterdam's secrets gardens

DAY 8: AMSTERDAM (DISEMBARKATION)

Your cruise ends with breakfast this morning. (B)

DATES & PRICING

TOUR CODE WAA - TULIP TIME CRUISE: AMSTERDAM to AMSTERDAM						
Date	Vessels	Cabin / USD / (Cruise Only) / pax				
		E	D	B	A	P
30 Mar – 06 Apr 2024	Panorama	-	-	4,648	4,748	4,798
Promotion 50%		-	-	2,324	2,374	2,399
27 Apr – 04 May 2024	Panorama	-	3,798	5,048	5,148	5,198
Promotion 50%		-	1,899	2,524	2,574	2,599
Excluded Port Charges USD 210 /Pax						
Excluded Gratuity USD 128/Pax						
Price and promotion are subject to change						

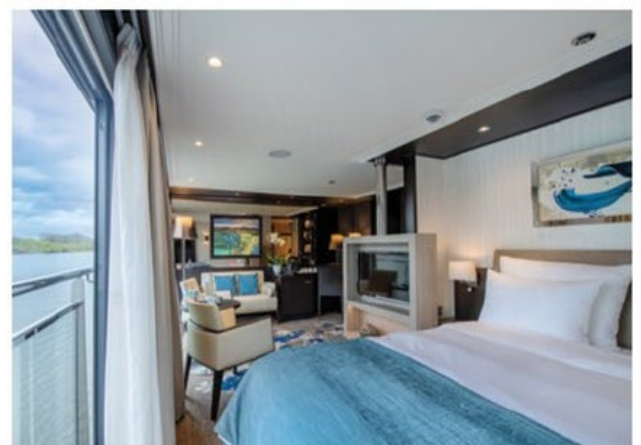
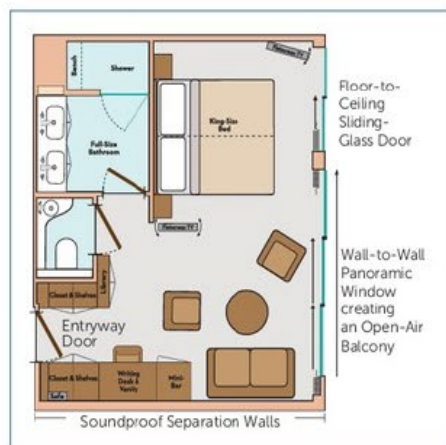
AVALON SUITE SHIPSSM

ROYAL SUITES, PANORAMA SUITESSM & DELUXE STATEROOMS

ROYAL SUITES

300 SQ. FT.

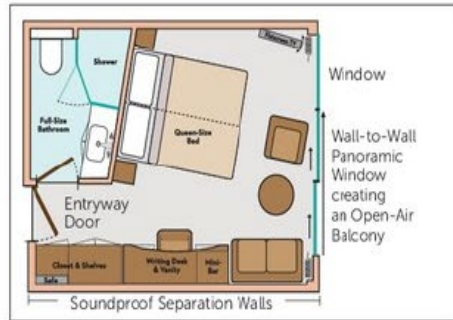
ROYAL DECK
CATEGORY S



PANORAMA SUITESSM

200 SQ. FT.

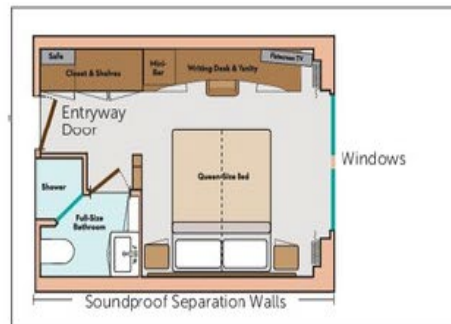
ROYAL & SAPPHIRE DECK
CATEGORY B, A, P



DELUXE STATEROOMS

172 SQ. FT.

INDIGO DECK
CATEGORY D, E





DECK PLAN			CATEGORIES	
1 Sky Lounge	6 Deck Game Area	12 Elevator	Royal Suite	Royal Deck Royal Suites
2 Navigation Bridge	7 Observation Lounge	13 Lobby	Cat. P	Royal Deck Panorama Suites
3 Sky Grill	8 Panorama Bistro	14 Club Lounge	Cat. A	Sapphire Deck Forward Panorama Suites
4 Whirlpool	9 Panorama Lounge	15 Galley	Cat. B	Sapphire Deck Aft Panorama Suites
5 Premium Lounge Chairs and Shade Awnings	10 Bar	16 Dining Room	Cat. D	Indigo Deck Aft Deluxe Staterooms
	11 Reception	17 Fitness Center	Cat. E	Indigo Deck Forward Deluxe Staterooms



TERMS AND CONDITIONS

Visas & Passports

You are responsible for obtaining and paying for all visas and entry documents, for meeting all health and other requirements, and for any documents required by the laws, regulations, orders, and/or requirements of the countries you will visit. The Company is not responsible for providing specific visa and passport information or documentation, and The Company cannot accept liability for any traveler refused entry onto any transport or into any country due to failure of the traveler to carry correct documentation. All travelers traveling internationally are required to have a passport. Most countries require that the passport be valid for at least six (6) months beyond the conclusion of the trip. It is recommended you have a minimum of three blank pages in your passport when traveling, as many countries require blank pages. Multiple-entry visas are required for some holidays. It is your responsibility to verify all visa and passport requirements. The process of obtaining a visa and/or passport can take up to three months or more.

Cancellations and Cancellation Fees

If cancellation is received in writing by The Company before the final payment due date of your holiday, the non-refundable deposit will be retained in addition to any airline-imposed fees or cancellation charges. If cancellation is received in writing by The Company after the final payment due date of your holiday, the below specified per person cancellation fees apply for individual reservations. The total price specified below does not include discounts, promotions, or special incentives. (For group reservations, refer to the Group Policy. SafetyNet Protection does not apply to Group Bookings). No cancellation fee will apply to holidays canceled within the cooling off period (see clause 5).



Standard Cancellation Fees for escorted and independent holidays:

45-22 days prior to scheduled departure: 20% of total price (including SafetyNet Protection)
21-8 days prior to scheduled departure: 30% of total price (including SafetyNet Protection)
7-1 days prior to scheduled departure: 50% of total price (including SafetyNet Protection)
On scheduled departure day and later: 100% of total price (including SafetyNet Protection)
Note: Pre-paid gratuities are not subject to cancellation fees.

PLEASE PROVIDE THE NAME, DATE OF BIRTH, AND EMAIL OF EACH PASSENGER AT THE TIME OF THE BOOKING

Standard Cancellation Fees for cruise holidays:

90-60 days prior to scheduled departure: 35% of total price (including SafetyNet Protection)
59-30 days prior to scheduled departure: 50% of total price (including SafetyNet Protection)
29-1 days prior to scheduled departure: 80% of total price (including SafetyNet Protection)
On scheduled departure day and later: 100% of total price (including SafetyNet Protection)
Note: Pre-paid gratuities and Port Charges are not subject to cancellation fees.

Exceptions to the standard cancellation fees:

Other cancellation fees may apply to holidays listed in this brochure. Please check with your Travel Agent or your local representative of The Company prior to booking for the latest Terms & Conditions.

Cancellation fees may also apply to any additional services reserved prior to, during, and after the holiday. If flight changes (including but not limited to flight cancellations or name changes) are requested, revision fees, change fees, or airline cancellation fees will apply in addition to the above cancellation fees (see "Revision Fees" below).

Cancellation fees relating to insurance policies will be subject to the Terms and Conditions of the insurance provider and will incur the standard Revision Fee (see "Revision Fees" below).

Insurance

The above cancellation charges will be applied in all cases. The Company strongly recommends you take out comprehensive travel insurance, including coverage for medical expenses, loss of luggage, and land content and airfare charges that may arise, including due to cancellation.

Revision Fees

A fee of \$30 per transaction will be charged for any alteration or revision made to a reservation after the deposit is made. Any revision to an air travel reservation may result in the loss of confirmed airline reservations or increased airfare which will be payable by you. Additional airline and hotel charges may also apply and may be up to 100% of the full price. A change of traveler name, holiday date, or itinerary after the final payment date will be treated as a full cancellation and new reservation; holiday cancellation fees (as above) apply.

Refunds

Please note that any request for refunds is subject to these Terms & Conditions. No refund will be made for unused services (including early or enforced disembarkation), for unused transportation where group activity tickets are involved, or for voluntary modifications made by the traveler.

The Company reserves the right to cancel or reschedule any holiday departure in accordance with operational requirements or circumstances beyond its control. If a holiday is canceled prior to the scheduled departure date, The Company's only responsibility will be to refund the amount received for the reservation. Wherever possible, The Company will offer the same holiday with a different departure date, or an alternative similar holiday. If there is a difference in cost, it will be your expense. For air inclusive holidays, The Company will try to confirm air schedules for the selected new dates, subject to availability. The Company is not responsible for any additional costs or fees relating to the issuance and/or cancellation of air tickets or other travel arrangements not made through The Company.

The accommodation listed in our websites/brochures is intended to be used on all departures. However, if a change becomes necessary for any reason, substitute accommodation will be equivalent in standard to that shown. No refunds are provided for accommodation variations and full cancellation penalties as noted above apply.



SafetyNet Protection

For booking up to 16 persons traveling together, a SafetyNet Protection can be purchased to be used in case the traveler(s) is not able to travel.

SafetyNet Protection is non-refundable, and conditions apply.

The SafetyNet Transfer Protection enables Globus Family passengers to amend their tour up to 24 hours prior to the tour departure date to another tour departing up to 31 December in the following calendar year, (once only) without any charges or penalties. If SafetyNet transfer protection is applied and the booking is subsequently canceled, the original booking and transfer date will be reviewed, the transfer date of the original booking will then be taken as the tour cancellation date. Cancellation penalties that apply to the original booking will be compared with the cancellation penalties to that of the tour transferred booking and the higher penalties will be applied.

The SafetyNet Cancellation Protection enables Globus Family passengers to cancel their tour in full - up to 30 days prior to the tour departure date, without any applicable cancellation charges or penalties.

CONDITIONS FOR BUY ONE GET ONE PROMOTION :

- Subject to availability, valid on new bookings only
- Offer does not apply to cruise extensions, port tax and gratuity
- Not combinable with any other offer or discounts
- Applicable to single travellers, full single supplement applies
- Not applicable to Royal Suites
- Full payment required at time of booking
- Booking is non-refundable (port tax and gratuity only are refundable)
- US\$60 Amendment fees applies to name changes
- Comprehensive travel insurance is highly recommended
- Applicable to named group bookings only, no group rebates apply
- Safetynet is applicable
- Departures noted * are themed cruises
- Further conditions may apply, offer can be withdrawn or amended at any time