

ROMANTIC RHINE

Tour: WZA • BASEL → AMSTERDAM

8

DAYS

4

COUNTRIES

One of Europe's most legendary rivers awaits you on this exciting journey along the Rhine River, which begins in Switzerland and visits France, Germany, and Holland! Board your Avalon Suite Ship in Basel, Switzerland, then head for Breisach, Germany, at the foot of the Kaiserstuhl Mountain on the French-German border. Here you'll find the gateway to Germany's Black Forest, an area of unrivaled natural beauty, best known for Black Forest ham, cherry cake, and the cuckoo clock. Continue your river cruise to Strasbourg, France, and marvel at the red-sandstone Gothic cathedral with ancient murals and the fascinating astronomical clock. Stroll through the lovely La Petite France district with its quaint shops, delightful bistros, and peaceful waterfront promenade. Visit the ruins of Heidelberg Castle, towering magnificently over the city, or stop in Mainz for a guided walk and a visit to the captivating Gutenberg Museum. Sail to the charming wine town of Rudesheim, and a visit to the unique Siegfried's Mechanical Musical Instrument Museum, then pass through the dramatic Rhine Gorge—the most beautiful view of the Rhine River where ancient castles stand on cliffs 400 feet above the water. Last stop in Germany is Cologne—a 2,000-year-old city known for its Gothic architecture and famous twin-spired cathedral.



At the conclusion of your Rhine River cruise, you'll spend time in colourful Amsterdam. The best way to see the treasures of this 700-year-old city is on an included canal cruise along the elegant grachten lined with homes dating back to the city's "Golden Age." Spend free time discovering world-famous museums, and an abundance of restaurants in the vibrant, modern capital of Holland.

Meals

Breakfast: 7 Lunch: 6 Dinner: 7

Transport

State-of-the-art, luxurious river cruise vessels with modern services and amenities

Accommodation

Deluxe outside accommodations with Avalon's exclusive Comfort Collection Beds

HIGHLIGHTS



ITINERARY

DAY 1: BASEL, SWITZERLAND (EMBARKATION)

Welcome to Switzerland. Your Suite Ship is Ready for Boarding. Flights into Zurich or Basel must arrive by 3 pm. Guests must be on board ship by 5 pm. Enjoy dinner and explore the ship on your first night on board. EVENING CRUISE TO BREISACH (D)

DAY 2: BREISACH, GERMANY. EXCURSION TO BLACK FOREST

German Winemaking and the Beautiful Black Forest Visit the Adventure Centre for today's activities with your Adventure Host. ACTIVE Enjoy the view on a relaxing bike ride along the Rhine with your Adventure Host, OR: DISCOVERY Join a full-day Guided Tour to the magical Black Forest to experience the Vogtsbauernhof open-air-museum, visit an authentic water mill, and see a traditional butter-making demonstration, OR: DISCOVERY Visit to a local winery in Breisach, where you will learn about German winemaking and enjoy a wine tasting, OR: CLASSIC Join a Guided Tour to explore Freiburg's medieval city centre, sheltered by the Black Forest amid vineyards and gardens of the Upper Rhine Valley. You may choose to join a Guided Optional Excursion to visit the charming village of Colmar in the morning, with its half-timbered medieval and early renaissance buildings. EVENING CRUISE TO STRASBOURG (B,L,D)

DAY 3: STRASBOURG, FRANCE

A Grand Cathedral and La Petite France ACTIVE Discover Strasbourg by bike with your Adventure Host, OR: CLASSIC Join a City Sightseeing Tour, including Strasbourg's Gothic, stained-glass cathedral with its celebrated ancient murals and astronomical clock, as well as the magical La Petite France District. You may also choose to join a Guided Optional Excursion to the historic Maginot Line-the pre-WWII fortifications designed to protect the eastern border of France, or visit Alsace's wine country today. Alternatively, take some free time in Strasbourg to visit a museum, or stroll across the city centre. EVENING/OVERNIGHT CRUISE TO MAINZ (B,L,D)

DAY 4: MAINZ, GERMANY. EXCURSION TO HEIDELBERG

Castle Walls, and the World's Biggest Wine Barrel ACTIVE Join your Avalon Adventure Host for an inspiring walk in Heidelberg, the Philosophers' way, OR: CLASSIC Enjoy a Guided Tour to Heidelberg Castle to see the ruins of the magnificent renaissance treasure towering above the city, and its famed Great Vat, the "World's Largest Wine Barrel," OR: CLASSIC Enjoy a Guided City Walk in Mainz, including a visit to the Gutenberg Museum to see the captivating history of printing. Enjoy live entertainment on board your ship this evening. OVERNIGHT DOCKING IN MAINZ (B,L,D)

DAY 5: RUDESHEIM-RHINE GORGE

Eat, Drink, and Be Merry in Wine Country ACTIVE Enjoy a hike with your Avalon Adventure Host through the picturesque vineyards of Rudesheim, OR: DISCOVERY Take a Guided Tour of the incredible Mechanical Music Museum for a one-of-a-kind instrumental experience; enjoy a tasting of the authentic Rudesheimer coffee. En route to Koblenz, sail through the Rhine Gorge (a UNESCO World Heritage site). Take in the breathtaking views of ancient castles perched on cliffs 400 feet above the water, and pass the legendary Rock of the Lorelei-where the mythological siren's songs lured ill-fated sailors. KOBLENZ Travel Through 2000 Years Of Monumental History Enjoy free time in Koblenz before a relaxing evening on board with dinner and live entertainment. OVERNIGHT DOCKING IN KOBLENZ (B,L,D)

DAY 6: COLOGNE

Prost! Celebrate in the Rhineland Join your Adventure Host for today's special activities. ACTIVE Enjoy a bike ride like the locals in Cologne with your Adventure Host, OR: DISCOVERY Choose a Guided Walking Tour of Cologne's important Jewish heritage sites, OR: CLASSIC Take a Guided City Walk of Cologne-with its soaring twin-steeped gothic cathedral. Spend free time over a glass of Kolsch pale lager-locally brewed for over 100 years! AFTERNOON/OVERNIGHT CRUISE TO AMSTERDAM (B,L,D)

DAY 7: AMSTERDAM, HOLLAND

Canals of Colourful Amsterdam ACTIVE Start your day joining your Adventure Host on an early morning walk in Amsterdam, OR: CLASSIC Explore the iconic waterways of Amsterdam on a Guided Canal Cruise past stately homes of Amsterdam's "Golden Age." During tulip season, you may take a Guided Optional Excursion to Keukenhof gardens-with more than seven million tulips, daffodils and hyacinths, as well as other bulbs, planted each year. Outside of tulip season, join a Guided Optional Excursion to Zaanse Schans to see historic windmills and charming Dutch houses. You may also choose an Optional Biking Tour to discover the countryside. Take some free time to explore Amsterdam's colourful streets and canal houses, galleries, and shops. OVERNIGHT DOCKING IN AMSTERDAM (B,L,D)

DAY 8: AMSTERDAM (DISEMBARKATION)

Your cruise ends with breakfast this morning. (B)

DATES & PRICING

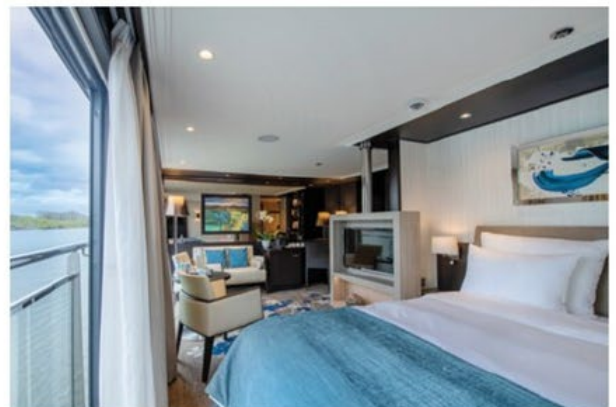
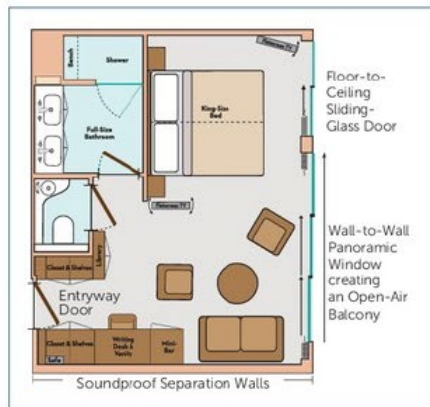
TOUR CODE WZA - ROMANTIC RHINE : BASEL to AMSTERDAM						
Date	Vessels	Cabin / USD / (Cruise Only) / pax				
		E	D	B	A	P
16 – 23 Apr, 2024	Illumination	3,499	3,698	4,948	5,048	5,098
Promotion 50%		1,750	1,849	2,474	2,524	2,549
30 APR – 07 MAY, 2024	Illumination	3,699	3,898	5,148	5,248	5,298
Promotion 50%		1,850	1,949	2,574	2,624	2,649
28 May – 04 Jun, 2024	Illumination	3,999	4,198	5,448	5,548	5,598
Promotion 50%		2,000	2,099	2,724	2,774	2,799
03 – 10 Aug, 2024	Vista	3,899	4,098	5,348	5,448	5,498
Promotion 50%		1,950	2,049	2,674	2,724	2,749
Excluded Port Charges USD 210 /Pax						
Excluded Gratuity USD 128 /Pax						
Price and promotion are subject to change						

AVALON SUITE SHIPSSM
 ROYAL SUITES, PANORAMA SUITESSM & DELUXE STATEROOMS

ROYAL SUITES

300 SQ. FT.

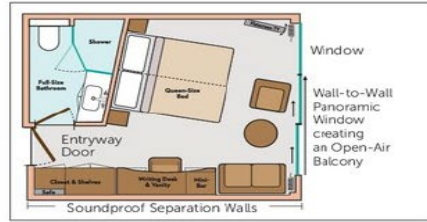
ROYAL DECK
 CATEGORY S



PANORAMA SUITESSM

200 SQ. FT.

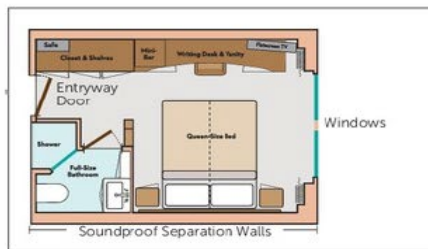
ROYAL & SAPPHIRE DECK
CATEGORY B, A, P



DELUXE STATEROOMS

172 SQ. FT.

INDIGO DECK
CATEGORY D, E



DECK PLAN

- | | | |
|---|----------------------|-------------------|
| 1 Sky Lounge | 6 Deck Game Area | 12 Elevator |
| 2 Navigation Bridge | 7 Observation Lounge | 13 Lobby |
| 3 Sky Grill | 8 Panorama Bistro | 14 Club Lounge |
| 4 Whirlpool | 9 Panorama Lounge | 15 Galley |
| 5 Premium Lounge
Chairs and Shade
Awnings | 10 Bar | 16 Dining Room |
| | 11 Reception | 17 Fitness Center |

CATEGORIES

- | | |
|--------------------|---|
| Royal Suite | Royal Deck Royal Suites |
| Cat P | Royal Deck Panorama Suites |
| Cat A | Sapphire Deck Forward Panorama Suites |
| Cat B | Sapphire Deck Aft Panorama Suites |
| Cat D | Indigo Deck Aft Deluxe Staterooms |
| Cat E | Indigo Deck Forward Deluxe Staterooms |



TERMS AND CONDITIONS

Visas & Passports

You are responsible for obtaining and paying for all visas and entry documents, for meeting all health and other requirements, and for any documents required by the laws, regulations, orders, and/or requirements of the countries you will visit. The Company is not responsible for providing specific visa and passport information or documentation, and The Company cannot accept liability for any traveler refused entry onto any transport or into any country due to failure of the traveler to carry correct documentation. All travelers traveling internationally are required to have a passport. Most countries require that the passport be valid for at least six (6) months beyond the conclusion of the trip. It is recommended you have a minimum of three blank pages in your passport when traveling, as many countries require blank pages. Multiple-entry visas are required for some holidays. It is your responsibility to verify all visa and passport requirements. The process of obtaining a visa and/or passport can take up to three months or more.

Cancellations and Cancellation Fees

If cancellation is received in writing by The Company before the final payment due date of your holiday, the non-refundable deposit will be retained in addition to any airline-imposed fees or cancellation charges. If cancellation is received in writing by The Company after the final payment due date of your holiday, the below specified per person cancellation fees apply for individual reservations. The total price specified below does not include discounts, promotions, or special incentives. (For group reservations, refer to the Group Policy. SafetyNet Protection does not apply to Group Bookings). No cancellation fee will apply to holidays canceled within the cooling off period (see clause 5).

Standard Cancellation Fees for escorted and independent holidays:

45-22 days prior to scheduled departure: 20% of total price (including SafetyNet Protection)

21-8 days prior to scheduled departure: 30% of total price (including SafetyNet Protection)

7-1 days prior to scheduled departure: 50% of total price (including SafetyNet Protection)

On scheduled departure day and later: 100% of total price (including SafetyNet Protection)

Note: Pre-paid gratuities are not subject to cancellation fees.

PLEASE PROVIDE THE NAME, DATE OF BIRTH, AND EMAIL OF EACH PASSENGER AT THE TIME OF THE BOOKING

Standard Cancellation Fees for cruise holidays:

90-60 days prior to scheduled departure: 35% of total price (including SafetyNet Protection)

59-30 days prior to scheduled departure: 50% of total price (including SafetyNet Protection)

29-1 days prior to scheduled departure: 80% of total price (including SafetyNet Protection)

On scheduled departure day and later: 100% of total price (including SafetyNet Protection)

Note: Pre-paid gratuities and Port Charges are not subject to cancellation fees.

Exceptions to the standard cancellation fees:

Other cancellation fees may apply to holidays listed in this brochure. Please check with your Travel Agent or your local representative of The Company prior to booking for the latest Terms & Conditions.

Cancellation fees may also apply to any additional services reserved prior to, during, and after the holiday. If flight changes (including but not limited to flight cancellations or name changes) are requested, revision fees, change fees, or airline cancellation fees will apply in addition to the above cancellation fees (see "Revision Fees" below).

Cancellation fees relating to insurance policies will be subject to the Terms and Conditions of the insurance provider and will incur the standard Revision Fee (see "Revision Fees" below).



Insurance

The above cancellation charges will be applied in all cases. The Company strongly recommends you take out comprehensive travel insurance, including coverage for medical expenses, loss of luggage, and land content and airfare charges that may arise, including due to cancellation.

Revision Fees

A fee of \$30 per transaction will be charged for any alteration or revision made to a reservation after the deposit is made. Any revision to an air travel reservation may result in the loss of confirmed airline reservations or increased airfare which will be payable by you. Additional airline and hotel charges may also apply and may be up to 100% of the full price. A change of traveler name, holiday date, or itinerary after the final payment date will be treated as a full cancellation and new reservation; holiday cancellation fees (as above) apply.

Refunds

Please note that any request for refunds is subject to these Terms & Conditions. No refund will be made for unused services (including early or enforced disembarkation), for unused transportation where group activity tickets are involved, or for voluntary modifications made by the traveler. The Company reserves the right to cancel or reschedule any holiday departure in accordance with operational requirements or circumstances beyond its control. If a holiday is canceled prior to the scheduled departure date, The Company's only responsibility will be to refund the amount received for the reservation. Wherever possible, The Company will offer the same holiday with different departure date, or an alternative similar holiday. If there is a difference in cost, it will be your expense. For air-inclusive holidays, The Company will try to confirm air schedules for the selected new dates, subject to availability. The Company is not responsible for any additional costs or fees relating to the issuance and/or cancellation of air tickets or other travel arrangements not made through The Company.

The accommodation listed in our websites/brochures is intended to be used on all departures. However, if a change becomes necessary for any reason, substitute accommodation will be equivalent in standard to that shown. No refunds are provided for accommodation variations and full cancellation penalties as noted above apply.

SafetyNet Protection

For booking up to 16 persons traveling together, a SafetyNet Protection can be purchased to be used in case the traveler(s) is not able to travel.

SafetyNet Protection is non-refundable and conditions apply.

The SafetyNet Transfer Protection enables Globus Family passengers to amend their tour up to 24 hours prior to the tour departure date to another tour departing up to 31 December in the following calendar year, (once only) without any charges or penalties. If SafetyNet transfer protection is applied and the booking is subsequently cancelled, the original booking and transfer date will be reviewed, the transfer date of the original booking will then be taken as the tour cancellation date. Cancellation penalties that apply to the original booking will be compared with the cancellation penalties to that of the tour transferred booking and the higher penalties will be applied.

The SafetyNet Cancellation Protection enables Globus Family passengers to cancel their tour in full - up to 30 days prior to the tour departure date, without any applicable cancellation charges or penalties.

CONDITIONS FOR BUY ONE GET ONE PROMOTION :

- Subject to availability, valid on new bookings only
- Offer does not apply to cruise extensions, port tax and gratuity
- Not combinable with any other offer or discounts
- Applicable to single travellers, full single supplement applies
- Not applicable to Royal Suites
- Full payment required at time of booking
- Booking is non-refundable (port tax and gratuity only are refundable)
- US\$60 Amendment fees applies to name changes
- Comprehensive travel insurance is highly recommended
- Applicable to named group bookings only, no group rebates apply
- Safetynet is applicable
- Departures noted * are themed cruises
- Further conditions may apply, offer can be withdrawn or amended at any time