

DANUBE DREAMS

Tour: WBD • BUDAPEST → VILSHOFEN

8

DAYS

4

COUNTRIES

Cruise along the peaceful Danube River through Hungary, Slovakia, Austria, and Germany—discovering some of Central Europe’s most splendid capitals and charming towns along the way. Begin this timeless European river cruise in Budapest, where guided sightseeing acquaints you with the highlights of the vibrant capital of Hungary. Set sail on the Danube, take pictures of the impressive Parliament Building as you leave Budapest, and head for Bratislava, the capital of Slovakia. Here, enjoy a guided walk through the delightful Old Town and visit the Gothic St. Martin’s Cathedral.

Vienna, Austria, the “City of Music,” makes an immediate impression with its lavish Habsburg Imperial Palace and neo-renaissance Vienna Opera House. Enjoy the magnificent views as your river cruise takes you through the picturesque wine region of the Wachau Valley, with stops for a guided walk in Dürnstein and a visit of the impressive Benedictine Abbey of Melk. In Linz, walk around the Hauptplatz— Austria’s largest medieval square, which forms the center of the city, and be sure to photograph the splendid Trinity Column. Passau, Germany, the “City of Three Rivers,” is uniquely located where the Inn, Ilz, and Danube rivers converge.

See its maze of narrow cobblestone streets lined with beautiful Patrician houses, and marvel at St. Stephen’s Cathedral, a masterpiece of baroque architecture. A memorable last stop on this delightful Danube River cruise holiday!

Please note: Itinerary is based on 2023, and is subject to change. Full details will be confirmed in 2023.

Meals

Breakfast: 7 Lunch: 6 Dinner: 7

Transport

State-of-the-art, luxurious river cruise vessels with modern services and amenities

Accommodation

Deluxe outside accommodations with Avalon’s exclusive Comfort Collection Beds



HIGHLIGHTS



ITINERARY

DAY 1: BUDAPEST, HUNGARY (EMBARKATION)

Welcome to Hungary. Your Suite Ship is Ready for Boarding. Flights into Budapest must arrive by 3:30 pm. Guests must be on board ship by 5 pm. The day is yours to relax and enjoy the city with time for photographs, cafes, and confections. OVERNIGHT DOCKING IN BUDAPEST (D)

DAY 2: BUDAPEST

The Pearl of the Danube in the Heart of Europe Visit the Adventure Centre for today's activities with your Adventure Host. ACTIVE - Hike up to a magnificent viewpoint in Budapest with your Adventure Host, OR: CLASSIC - Enjoy a Guided City Sightseeing, including the iconic Heroes' Square. This afternoon choose among a wide selection of Optional Guided Excursions or take in the beauty of Budapest while enjoying some free time exploring such famous sights as the Chain Bridge. Get to know the city's cafes and pubs, or take a hike through the hills above the Danube. EVENING/OVERNIGHT CRUISE TO BRATISLAVA (B,L,D)

DAY 3: BRATISLAVA, SLOVAKIA

Cathedral Coronations and a Crowning Castle ACTIVE - Follow your Avalon Adventure Host on a hike to lofty Bratislava Castle, OR: CLASSIC - Take a Guided City Walk, including the quaint streets of Old Town, Town Hall, and the sight of royal coronations at St. Martin's Cathedral. This afternoon, enjoy free time to discover on your own Bratislava, the beautiful capital of Slovakia, rich in history and culture, but also a green city with its forests and parks just a hop away from the city centre. OVERNIGHT CRUISE TO VIENNA (B,L,D)

DAY 4: VIENNA

Strauss, Schnitzel, Strudel, and Sachertorte ACTIVE - Explore Vienna's Danube Island by bike with your Adventure Host, OR: CLASSIC - Explore the Habsburg empire with a morning Guided City Tour of Vienna's gilded landmarks. See the Imperial Palace complex-Winter residence of the Imperial Family, the iconic Vienna Opera House and stunning St. Stephen's Cathedral, OR: CLASSIC - After a short walk of Vienna, join a Guided Visit of Austria's largest museum, the legendary Kunsthistorisches Museum (Museum of Fine Arts). You may decide to take a Guided Optional Excursion to Schonbrunn Palace-the former imperial summer home of the Habsburg monarchy. Spend free time strolling in the pedestrian Karntnerstrasse-the most famous shopping avenue in central Vienna, or take a bike ride through the city and stop in a local cafe to enjoy of Sachertorte or Apfelstrudel. This evening, enjoy an unforgettable musical performance with an Optional Excursion to attend a Royal Waltz Concert in an elegant hall. OVERNIGHT CRUISE TO DURNSTEIN (B,L,D)

DAY 5: DURNSTEIN-WACHAU VALLEY

A King's Ransom and Castle Ruins ACTIVE - Join a Guided Hike up to the castle ruins to take in the spectacular view of the village, Danube, and the Wachau Valley below, OR: CLASSIC - Join a Guided Walk, and hear the legendary tale of King Richard the Lionheart-who was imprisoned in the castle during the Crusades. Later, stretch out on the Sky Deck as you sail through the Wachau Valley past vineyards, castles, and charming villages on your way to Ybbs. ACTIVE - Alternatively join your Adventure Host for a bike along the river. YBBS. EXCURSION TO MELK Frescoes Above and Vineyards Below CLASSIC - Visit the Lower Austrian little town of Ybbs. Walk through the doors of Austrian history with a guided sightseeing tour of Artstetten Castle, OR: CLASSIC - Take a Guided Tour of Melk's magnificent Benedictine Abbey to marvel at its frescoed ceilings, statues, incredible library, and ornate pipe organ. EVENING/OVERNIGHT CRUISE TO LINZ (B,L,D)

DAY 6: LINZ

Legendary, Lovely Linz Ask about today's energizing or relaxing Adventure Host activities. CLASSIC - Take a Guided Walk through the city's historic and beautiful sites along the shore of the Danube and see Hauptplatz-Austria's largest medieval square-and the towering white-marble Trinity Column. ACTIVE - Experience Danube's cycle path, follow your Adventure Host for a bike ride around the area of Linz. Alternatively, consider a full-day Guided Optional Excursion to Salzburg-the city of Mozart-or to the picturesque Bohemian town of Cesky Krumlov. OVERNIGHT DOCKING IN LINZ (B,L,D)

DAY 7: SCHLOGEN OXBOW-PASSAU, GERMANY

Where the Danube, Inn, and Ilz Rivers Meet This morning, cruise through the Schlogen Oxbow, a particularly beautiful horseshoe-shaped bend of the river. ACTIVE - Join your Avalon Adventure Host for Hiking from Oberhaus along a trail down to the valley and along Ilz River, OR: CLASSIC - Take a Guided City Walk into Passau, the beautiful "City of Three Rivers." Before sailing to Vilshofen, take a little free time to explore Passau's cobblestone streets and galleries of Artists' Alley. Maybe stop at St. Stephen's Cathedral to catch a concert rehearsal. EVENING/OVERNIGHT CRUISE TO VILSHOFEN (B,L,D)

DAY 8: VILSHOFEN (DISEMBARKATION)

Your cruise ends with breakfast this morning. Flights should not leave Munich airport before 8 am. (B)

DATES & PRICING

TOUR CODE WBD – DANUBE DREAMS : BUDAPEST to VILSHOFEN						
Date	Vessels	Cabin / USD / (Cruise Only) / pax				
		E	D	B	A	P
09 – 16 Apr 2024 **Wine Appreciation**	Impression	-	3,598	4,848	4,948	4,998
Promotion 50%		-	1,799	2,424	2,474	2,499
01 – 08 Jul 2024	Envision	3,899	4,098	5,348	5,448	5,498
Promotion 50%		1,950	2,049	2,674	2,724	2,749
03 – 10 Jul 2024	Imagery II	3,899	4,098	5,348	5,448	5,498
Promotion 50%		1,950	2,049	2,674	2,724	2,749
09 – 16 Jul 2024	View	3,899	4,098	5,348	5,448	5,498
Promotion 50%		1,950	2,049	2,674	2,724	2,749
Excluded Port Charges USD 210/Pax						
Excluded Gratuity USD 128/Pax						
Price and promotion are subject to change						

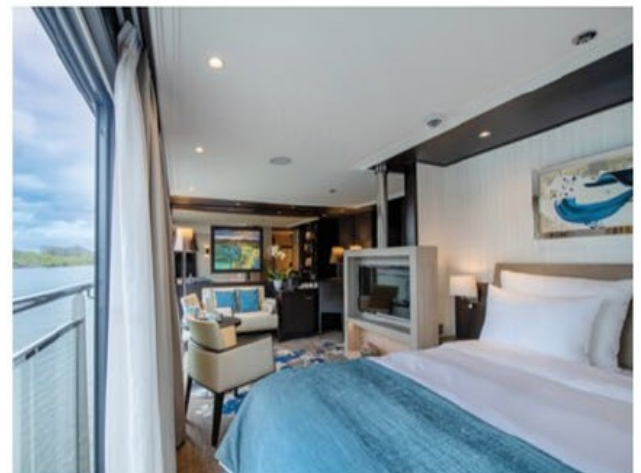
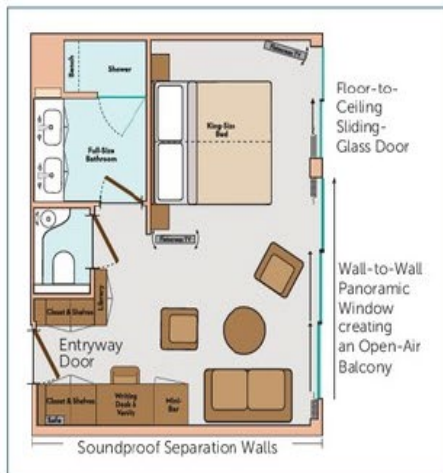
AVALON SUITE SHIPSSM

ROYAL SUITES, PANORAMA SUITESSM & DELUXE STATEROOMS

ROYAL SUITES

300 SQ. FT.

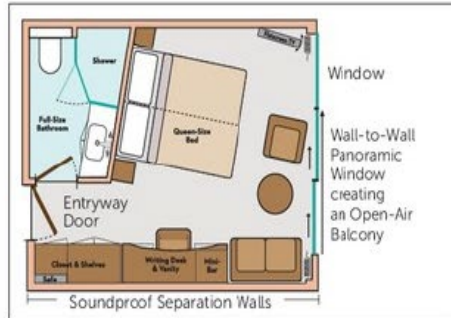
ROYAL DECK
CATEGORY S



PANORAMA SUITESSM

200 SQ. FT.

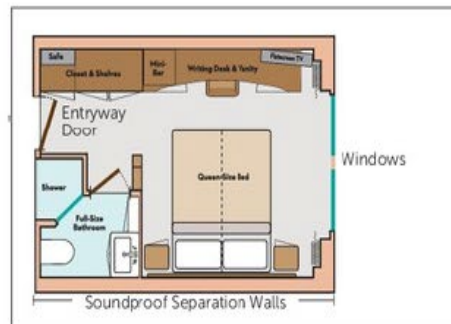
ROYAL & SAPPHIRE DECK
CATEGORY B, A, P



DELUXE STATEROOMS

172 SQ. FT.

INDIGO DECK
CATEGORY D, E





DECK PLAN			CATEGORIES	
1 Sky Lounge	6 Deck Game Area	12 Elevator	Royal Suite	Royal Deck Royal Suites
2 Navigation Bridge	7 Observation Lounge	13 Lobby	Cat. P	Royal Deck Panorama Suites
3 Sky Grill	8 Panorama Bistro	14 Club Lounge	Cat. A	Sapphire Deck Forward Panorama Suites
4 Whirlpool	9 Panorama Lounge	15 Galley	Cat. B	Sapphire Deck Aft Panorama Suites
5 Premium Lounge Chairs and Shade Awnings	10 Bar	16 Dining Room	Cat. D	Indigo Deck Aft Deluxe Staterooms
	11 Reception	17 Fitness Center	Cat. E	Indigo Deck Forward Deluxe Staterooms



TERMS AND CONDITIONS

Visas & Passports

You are responsible for obtaining and paying for all visas and entry documents, for meeting all health and other requirements, and for any documents required by the laws, regulations, orders, and/or requirements of the countries you will visit. The Company is not responsible for providing specific visa and passport information or documentation, and The Company cannot accept liability for any traveller refused entry onto any transport or into any country due to failure of the traveller to carry correct documentation. All travellers travelling internationally are required to have a passport. Most countries require that the passport be valid for at least six (6) months beyond the conclusion of the trip. It is recommended you have a minimum of three blank pages in your passport when travelling, as many countries require blank pages. Multiple-entry visas are required for some holidays. It is your responsibility to verify all visa and passport requirements. The process of obtaining a visa and/or passport can take up to three months or more.

Cancellations and Cancellation Fees

If cancellation is received in writing by The Company before the final payment due date of your holiday, the non-refundable deposit will be retained in addition to any airline-imposed fees or cancellation charges. If cancellation is received in writing by The Company after the final payment due date of your holiday, the below specified per person cancellation fees apply for individual reservations. The total price specified below does not include discounts, promotions, or special incentives. (For group reservations, refer to the Group Policy. SafetyNet Protection does not apply to Group Bookings). No cancellation fee will apply to holidays cancelled within the cooling off period (see clause 5).



Standard Cancellation Fees for escorted and independent holidays:

45-22 days prior to scheduled departure: 20% of total price (including SafetyNet Protection)

21-8 days prior to scheduled departure: 30% of total price (including SafetyNet Protection)

7-1 days prior to scheduled departure: 50% of total price (including SafetyNet Protection)

On scheduled departure day and later: 100% of total price (including SafetyNet Protection)

Note: Pre-paid gratuities are not subject to cancellation fees.

PLEASE PROVIDE THE NAME, DATE OF BIRTH, AND EMAIL OF EACH PASSENGER AT THE TIME OF THE BOOKING

Standard Cancellation Fees for cruise holidays:

90-60 days prior to scheduled departure: 35% of total price (including SafetyNet Protection)

59-30 days prior to scheduled departure: 50% of total price (including SafetyNet Protection)

29-1 days prior to scheduled departure: 80% of total price (including SafetyNet Protection)

On scheduled departure day and later: 100% of total price (including SafetyNet Protection)

Note: Pre-paid gratuities and Port Charges are not subject to cancellation fees.

Exceptions to the standard cancellation fees:

Other cancellation fees may apply to holidays listed in this brochure. Please check with your Travel Agent or your local representative of The Company prior to booking for the latest Terms & Conditions.

Cancellation fees may also apply to any additional services reserved prior to, during, and after the holiday. If flight changes (including but not limited to flight cancellations or name changes) are requested, revision fees, change fees, or airline cancellation fees will apply in addition to the above cancellation fees (see "Revision Fees" below).

Cancellation fees relating to insurance policies will be subject to the Terms and Conditions of the insurance provider and will incur the standard Revision Fee (see "Revision Fees" below).

Insurance

The above cancellation charges will be applied in all cases. The Company strongly recommends you take out comprehensive travel insurance, including coverage for medical expenses, loss of luggage, and land content and airfare charges that may arise, including due to cancellation.

Revision Fees

A fee of \$30 per transaction will be charged for any alteration or revision made to a reservation after the deposit is made. Any revision to an air travel reservation may result in the loss of confirmed airline reservations or increased airfare which will be payable by you. Additional airline and hotel charges may also apply and may be up to 100% of the full price. A change of traveller name, holiday date, or itinerary after the final payment date will be treated as a full cancellation and new reservation; holiday cancellation fees (as above) apply.

Refunds

Please note that any request for refunds is subject to these Terms & Conditions. No refund will be made for unused services (including early or enforced disembarkation), for unused transportation where group activity tickets are involved, or for voluntary modifications made by the traveller.

The Company reserves the right to cancel or reschedule any holiday departure in accordance with operational requirements or circumstances beyond its control. If a holiday is cancelled prior to the scheduled departure date, The Company's only responsibility will be to refund the amount received for the reservation. Wherever possible, The Company will offer the same holiday with a different departure date, or an alternative similar holiday. If there is a difference in cost, it will be your expense. For air inclusive holidays, The Company will try to confirm air schedules for the selected new dates, subject to availability. The Company is not responsible for any additional costs or fees relating to the issuance and/or cancellation of air tickets or other travel arrangements not made through The Company.

The accommodation listed in our websites/brochures is intended to be used on all departures. However, if a change becomes necessary for any reason, substitute accommodation will be equivalent in standard to that shown. No refunds are provided for accommodation variations and full cancellation penalties as noted above apply.

SafetyNet Protection

For booking up to 16 persons traveling together, a SafetyNet Protection can be purchased to be used in case the traveler(s) is not able to travel.

SafetyNet Protection is non-refundable, and conditions apply.

The SafetyNet Transfer Protection enables Globus Family passengers to amend their tour up to 24 hours prior to the tour departure date to another tour departing up to 31 December in the following calendar year, (once only) without any charges or penalties. If SafetyNet transfer protection is applied and the booking is subsequently canceled, the original booking and transfer date will be reviewed, the transfer date of the original booking will then be taken as the tour cancellation date. Cancellation penalties that apply to the original booking will be compared with the cancellation penalties to that of the tour transferred booking and the higher penalties will be applied.

The SafetyNet Cancellation Protection enables Globus Family passengers to cancel their tour in full - up to 30 days prior to the tour departure date, without any applicable cancellation charges or penalties.

CONDITIONS FOR BUY ONE GET ONE PROMOTION :

- Subject to availability, valid on new bookings only
- Offer does not apply to cruise extensions, port tax and gratuity
- Not combinable with any other offer or discounts
- Applicable to single travellers, full single supplement applies
- Not applicable to Royal Suites
- Full payment required at time of booking
- Booking is non-refundable (port tax and gratuity only are refundable)
- US\$60 Amendment fees applies to name changes
- Comprehensive travel insurance is highly recommended
- Applicable to named group bookings only, no group rebates apply
- Safetynet is applicable
- Departures noted * are themed cruises
- Further conditions may apply, offer can be withdrawn or amended at any time