

PARIS TO NORMANDY

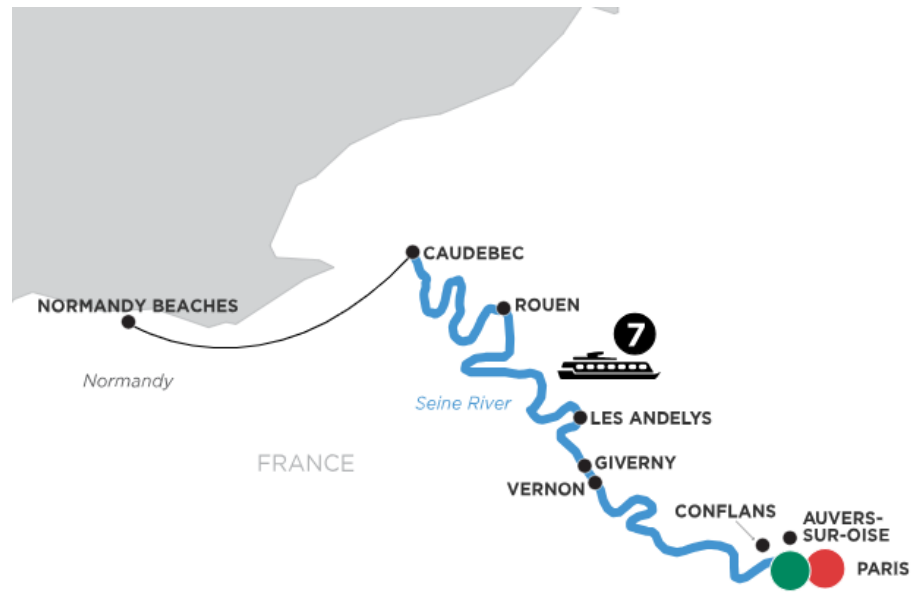
Tour: WPP • PARIS → PARIS

8
DAYS

1
COUNTRY

This fabulous river cruise begins and ends in Paris, with a spectacular cruise to Normandy. You'll sail from Paris to Vernon with your choice of two included excursions—a guided visit to master impressionist Claude Monet's home and gardens at Giverny, or a guided tour of the remarkable Bizy Castle, known as "Normandy's Versailles."

You'll sail through the picturesque and historic landscapes of Normandy, with the choice to visit the historic sites of the famed WWII landing beaches, and moving monuments to Allied forces, or you may explore the farming region for a "Taste of Normandy." In Rouen, site of Saint Joan of Arc's martyrdom, take a guided walk through the medieval quarter and visit the Gothic Rouen Cathedral—once the tallest building in the world. From Conflans, join in an excursion to the quaint and inspiring town of Auvers-Sur-Oise—inspired setting for several famous artists, including Vincent van Gogh—or visit Napoleon and Josephine's Malmaison. Your Seine River cruise returns to Paris with more time to explore the romantic city. Discover the true heart of Paris on a guided walk through the sites of Paris' rich history, or take a tour to see its iconic landmarks, including the Louvre Museum, Arc de Triomphe, Eiffel Tower, and more.



During the Olympics and Paralympic games some areas might be closed or not accessible to groups, therefore the program might be subject to change.

Meals

Breakfast: 7 Lunch: 6 Dinner: 7

Transport

State-of-the-art, luxurious river cruise vessels with modern services and amenities

Accommodation

Deluxe outside accommodations with Avalon's exclusive Comfort Collection Beds

HIGHLIGHTS



ITINERARY

DAY 1: PARIS, FRANCE (EMBARKATION)

Welcome to France. Your Suite Ship is Ready for Boarding. Flights into Paris must arrive by 2:30 pm. Guests must be on board ship by 5 pm. Your day is free to explore the world's most romantic city before starting your cruise on the Seine. Get acquainted with the City of Light today with some shopping, strolling, or with a croissant and cafe au lait to watch the world go by amid the Parisian cityscape. EVENING/OVERNIGHT CRUISE TO VERNON (D)

DAY 2: VERNON

Monet's Muses, Castle Courtyards, and Crepes du Jour Visit the Adventure Centre for today's activities with your Adventure Host. ACTIVE Explore Vernon's Chateau des Tourelles by foot with your Adventure Host, OR: CLASSIC Take a Guided Tour of Giverny, home and inspiration of the master impressionist painter Claude Monet. Walk the grounds and see Monet's charming residence, and the flower and water gardens captured in his masterpieces*, OR: CLASSIC Join a Guided Visit to Bizy Castle-called "Normandy's Versailles" for its magnificent courtyard, water garden, and stables. DISCOVERY While sailing, enjoy a traditional French luncheon of authentic French crepes, followed by a Pastry Demonstration. This afternoon, enjoy a beautiful cruise to the picturesque town of Les Andelys. LES ANDELYS Serenity on the Seine ACTIVE Join a Guided Hike up to the castle ruins of Chateau Gaillard-historic home of King Richard the Lionheart, OR: CLASSIC Take a Guided Walking Tour of Les Andelys-one of France's most picturesque spots on the Seine. EVENING/OVERNIGHT CRUISE TO CAUDEBEC (B,L,D) *Monet's House is closed in March and November. During this period this excursion will be replaced with a Guided Tour of La Roche-Guyon and its castle

DAY 3: CAUDEBEC

Ancient Abbeys Along the Seine ACTIVE Enjoy a relaxing bike ride along the river with your Adventure Host, OR: CLASSIC Take a Guided Trip along the Normandy Abbeys Route-where more than 100 medieval Benedictine and Augustine abbeys and churches were built along the Seine. This afternoon, you may choose a Guided Optional Excursion to the old seaside town of Honfleur. OVERNIGHT DOCKING IN CAUDEBEC (B,L,D)



DAY 4: CAUDEBEC. EXCURSION TO NORMANDY

Heroic Bravery on Normandy Beaches and French Farming Traditions CLASSIC Join a Guided Tour of Normandy's WWII landing beaches, visit significant U.S. sites, including Omaha Beach, the Pointe du Hoc monument, and the American Cemetery, OR: CLASSIC Take a full-day Guided Tour of the British and Canadian commemorative sites, including the British cemetery, Pegasus Memorial, the seaside town of Arromanches, the Juno Beach centre, and the Beny-sur-Mer Canadian War Cemetery, OR: CLASSIC Join "A Taste of Normandy" Guided Tour for an in-depth look at this rich agricultural region. See the famous Bayeux Tapestry, visit the beautiful village of Beuvron en Auge and taste Calvados at a local distillery. Later, enjoy live entertainment on board your ship. EVENING CRUISE TO ROUEN (B,L,D)

DAY 5: ROUEN

The Cathedral of Our Lady and a Heroine for France ACTIVE Take a Guided Bike Tour to discover and explore the most famous monuments and the lesser known hidden gems of Rouen on two wheels, OR: CLASSIC Take a Guided Walking Tour of Rouen-site of Saint Joan of Arc's martyrdom-and see the medieval quarter with its 16th-century Astronomical Clock, and Notre-Dame Cathedral. EVENING/OVERNIGHT CRUISE TO CONFLANS (B,L,D)

DAY 6: CONFLANS

The Footsteps of Van Gogh, Bonaparte, and Louis XIV ACTIVE Enjoy a relaxing bike ride along the Seine with your Adventure Host, OR: CLASSIC Join a Guided Visit to Auvers-sur-Oise, home and resting place of Vincent van Gogh, OR: CLASSIC Take a Guided tour of the opulent Chateau de Malmaison*-home of Napoleon Bonaparte and his wife Josephine. Perhaps, join a Guided Optional Excursion to the Palace of Versailles-home to a succession of French kings. EVENING CRUISE TO PARIS (B,L,D) * Chateau de Malmaison is closed the 1st Monday of each month and on 22nd September. On these dates, this excursion will be replaced by a visit to Chateau de Chantilly.

DAY 7: PARIS

Cafes, Cathedrals and Canvases in the city of Light Join your Adventure Host for today's special activities. ACTIVE Experience the Seine river by foot with your Adventure Host, OR: CLASSIC Discover the ancient heart of Paris on a captivating Guided Walk featuring the Palais-Royal, Louvre pyramid, ancient sites on Ile de la Cite, the Left Bank, bustling Latin Quarter, and more, OR: CLASSIC Join a Guided City Tour, that shows you the iconic sites of Paris, such as the Louvre Museum, the Arc de Triomphe, the Eiffel Tower, Opera Garnier, and the famous Champs-Elysees. Stroll through Paris on your own or linger over wine in a literary cafe on the Left Bank. OVERNIGHT DOCKING IN PARIS (B,L,D)

DAY 8: PARIS (DISEMBARKATION)

Your cruise ends with breakfast this morning. (B)

DATES & PRICING

TOUR CODE WPP – PARIS TO NORMANDY : PARIS to PARIS						
Date	Vessels	Cabin / USD / (Cruise Only) / pax				
		E	D	B	A	P
23 – 30 Jul 2024	Tapestry II	4,199	4,398	5,648	5,748	5,798
Promotion 50%		2,100	2,199	2,824	2,874	2,899
30 Jul – 06 Aug 2024	Tapestry II	4,199	4,398	5,648	5,748	5,798
Promotion 50%		2,100	2,199	2,824	2,874	2,899
06 – 13 Aug 2024	Tapestry II	4,199	4,398	5,648	5,748	5,798
Promotion 50%		2,100	2,199	2,824	2,874	2,899
Excluded Port Charges USD 210 /Pax						
Excluded Gratuity USD 128 /Pax						
Price and promotion are subject to change						

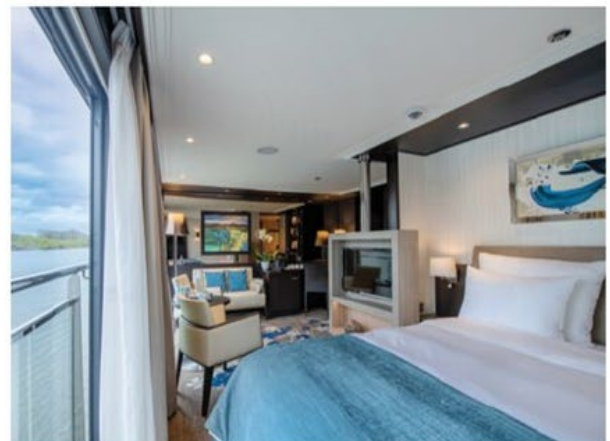
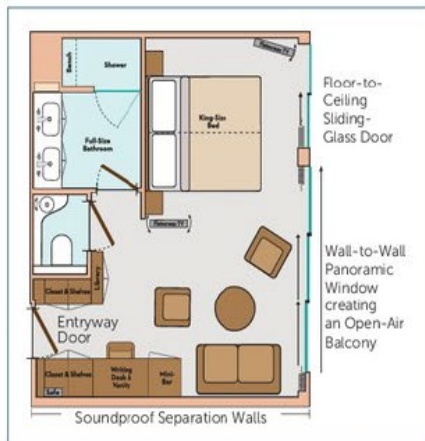
AVALON SUITE SHIPSSM

ROYAL SUITES, PANORAMA SUITESSM & DELUXE STATEROOMS

ROYAL SUITES

300 SQ. FT.

ROYAL DECK
CATEGORY S



PANORAMA SUITESSM

200 SQ. FT.

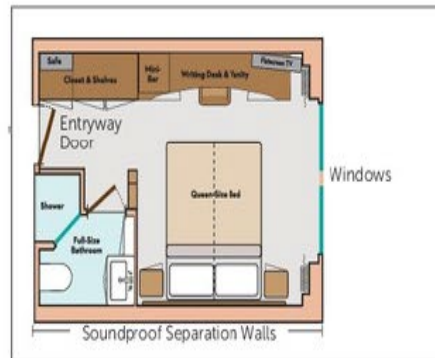
ROYAL & SAPPHIRE DECK
CATEGORY B, A, P



DELUXE STATEROOMS

172 SQ. FT.

INDIGO DECK
CATEGORY D, E





DECK PLAN			CATEGORIES	
1 Sky Lounge	6 Deck Game Area	12 Elevator	Royal Suite	Royal Deck Royal Suites
2 Navigation Bridge	7 Observation Lounge	13 Lobby	Cat. P	Royal Deck Panorama Suites
3 Sky Grill	8 Panorama Bistro	14 Club Lounge	Cat. A	Sapphire Deck Forward Panorama Suites
4 Whirlpool	9 Panorama Lounge	15 Galley	Cat. B	Sapphire Deck Aft Panorama Suites
5 Premium Lounge Chairs and Shade Awnings	10 Bar	16 Dining Room	Cat. D	Indigo Deck Aft Deluxe Staterooms
	11 Reception	17 Fitness Center	Cat. E	Indigo Deck Forward Deluxe Staterooms



TERMS AND CONDITIONS

Visas & Passports

You are responsible for obtaining and paying for all visas and entry documents, for meeting all health and other requirements, and for any documents required by the laws, regulations, orders, and/or requirements of the countries you will visit. The Company is not responsible for providing specific visa and passport information or documentation, and The Company cannot accept liability for any traveler refused entry onto any transport or into any country due to failure of the traveler to carry correct documentation. All travelers traveling internationally are required to have a passport. Most countries require that the passport be valid for at least six (6) months beyond the conclusion of the trip. It is recommended you have a minimum of three blank pages in your passport when traveling, as many countries require blank pages. Multiple-entry visas are required for some holidays. It is your responsibility to verify all visa and passport requirements. The process of obtaining a visa and/or passport can take up to three months or more.

Cancellations and Cancellation Fees

If cancellation is received in writing by The Company before the final payment due date of your holiday, the non-refundable deposit will be retained in addition to any airline-imposed fees or cancellation charges. If cancellation is received in writing by The Company after the final payment due date of your holiday, the below specified per person cancellation fees apply for individual reservations. The total price specified below does not include discounts, promotions, or special incentives. (For group reservations, refer to the Group Policy. SafetyNet Protection does not apply to Group Bookings). No cancellation fee will apply to holidays canceled within the cooling off period (see clause 5).



Standard Cancellation Fees for escorted and independent holidays:

45-22 days prior to scheduled departure: 20% of total price (including SafetyNet Protection)

21-8 days prior to scheduled departure: 30% of total price (including SafetyNet Protection)

7-1 days prior to scheduled departure: 50% of total price (including SafetyNet Protection)

On scheduled departure day and later: 100% of total price (including SafetyNet Protection)

Note: Pre-paid gratuities are not subject to cancellation fees.

PLEASE PROVIDE THE NAME, DATE OF BIRTH, AND EMAIL OF EACH PASSENGER AT THE TIME OF THE BOOKING

Standard Cancellation Fees for cruise holidays:

90-60 days prior to scheduled departure: 35% of total price (including SafetyNet Protection)

59-30 days prior to scheduled departure: 50% of total price (including SafetyNet Protection)

29-1 days prior to scheduled departure: 80% of total price (including SafetyNet Protection)

On scheduled departure day and later: 100% of total price (including SafetyNet Protection)

Note: Pre-paid gratuities and Port Charges are not subject to cancellation fees.

Exceptions to the standard cancellation fees:

Other cancellation fees may apply to holidays listed in this brochure. Please check with your Travel Agent or your local representative of The Company prior to booking for the latest Terms & Conditions.

Cancellation fees may also apply to any additional services reserved prior to, during, and after the holiday. If flight changes (including but not limited to flight cancellations or name changes) are requested, revision fees, change fees, or airline cancellation fees will apply in addition to the above cancellation fees (see "Revision Fees" below).

Cancellation fees relating to insurance policies will be subject to the Terms and Conditions of the insurance provider and will incur the standard Revision Fee (see "Revision Fees" below).

Insurance

The above cancellation charges will be applied in all cases. The Company strongly recommends you take out comprehensive travel insurance, including coverage for medical expenses, loss of luggage, and land content and airfare charges that may arise, including due to cancellation.

Revision Fees

A fee of \$30 per transaction will be charged for any alteration or revision made to a reservation after the deposit is made. Any revision to an air travel reservation may result in the loss of confirmed airline reservations or increased airfare which will be payable by you. Additional airline and hotel charges may also apply and may be up to 100% of the full price. A change of traveler name, holiday date, or itinerary after the final payment date will be treated as a full cancellation and new reservation; holiday cancellation fees (as above) apply.

Refunds

Please note that any request for refunds is subject to these Terms & Conditions. No refund will be made for unused services (including early or enforced disembarkation), for unused transportation where group activity tickets are involved, or for voluntary modifications made by the traveler.

The Company reserves the right to cancel or reschedule any holiday departure in accordance with operational requirements or circumstances beyond its control. If a holiday is canceled prior to the scheduled departure date, The Company's only responsibility will be to refund the amount received for the reservation. Wherever possible, The Company will offer the same holiday with a different departure date, or an alternative similar holiday. If there is a difference in cost, it will be your expense. For air inclusive holidays, The Company will try to confirm air schedules for the selected new dates, subject to availability. The Company is not responsible for any additional costs or fees relating to the issuance and/or cancellation of air tickets or other travel arrangements not made through The Company.



The accommodation listed in our websites/brochures is intended to be used on all departures. However, if a change becomes necessary for any reason, substitute accommodation will be equivalent in standard to that shown. No refunds are provided for accommodation variations and full cancellation penalties as noted above apply.

SafetyNet Protection

For booking up to 16 persons traveling together, a SafetyNet Protection can be purchased to be used in case the traveler(s) is not able to travel.

SafetyNet Protection is non-refundable and conditions apply.

The SafetyNet Transfer Protection enables Globus Family passengers to amend their tour up to 24 hours prior to the tour departure date to another tour departing up to 31 December in the following calendar year, (once only) without any charges or penalties. If SafetyNet transfer protection is applied and the booking is subsequently cancelled, the original booking and transfer date will be reviewed, the transfer date of the original booking will then be taken as the tour cancellation date. Cancellation penalties that apply to the original booking will be compared with the cancellation penalties to that of the tour transferred booking and the higher penalties will be applied.

The SafetyNet Cancellation Protection enables Globus Family passengers to cancel their tour in full - up to 30 days prior to the tour departure date, without any applicable cancellation charges or penalties.

CONDITIONS FOR BUY ONE GET ONE PROMOTION :

- Subject to availability, valid on new bookings only
- Offer does not apply to cruise extensions, port tax and gratuity
- Not combinable with any other offer or discounts
- Applicable to single travellers, full single supplement applies
- Not applicable to Royal Suites
- Full payment required at time of booking
- Booking is non-refundable (port tax and gratuity only are refundable)
- US\$60 Amendment fees applies to name changes
- Comprehensive travel insurance is highly recommended
- Applicable to named group bookings only, no group rebates apply
- Safetynet is applicable
- Departures noted * are themed cruises
- Further conditions may apply, offer can be withdrawn or amended at any time